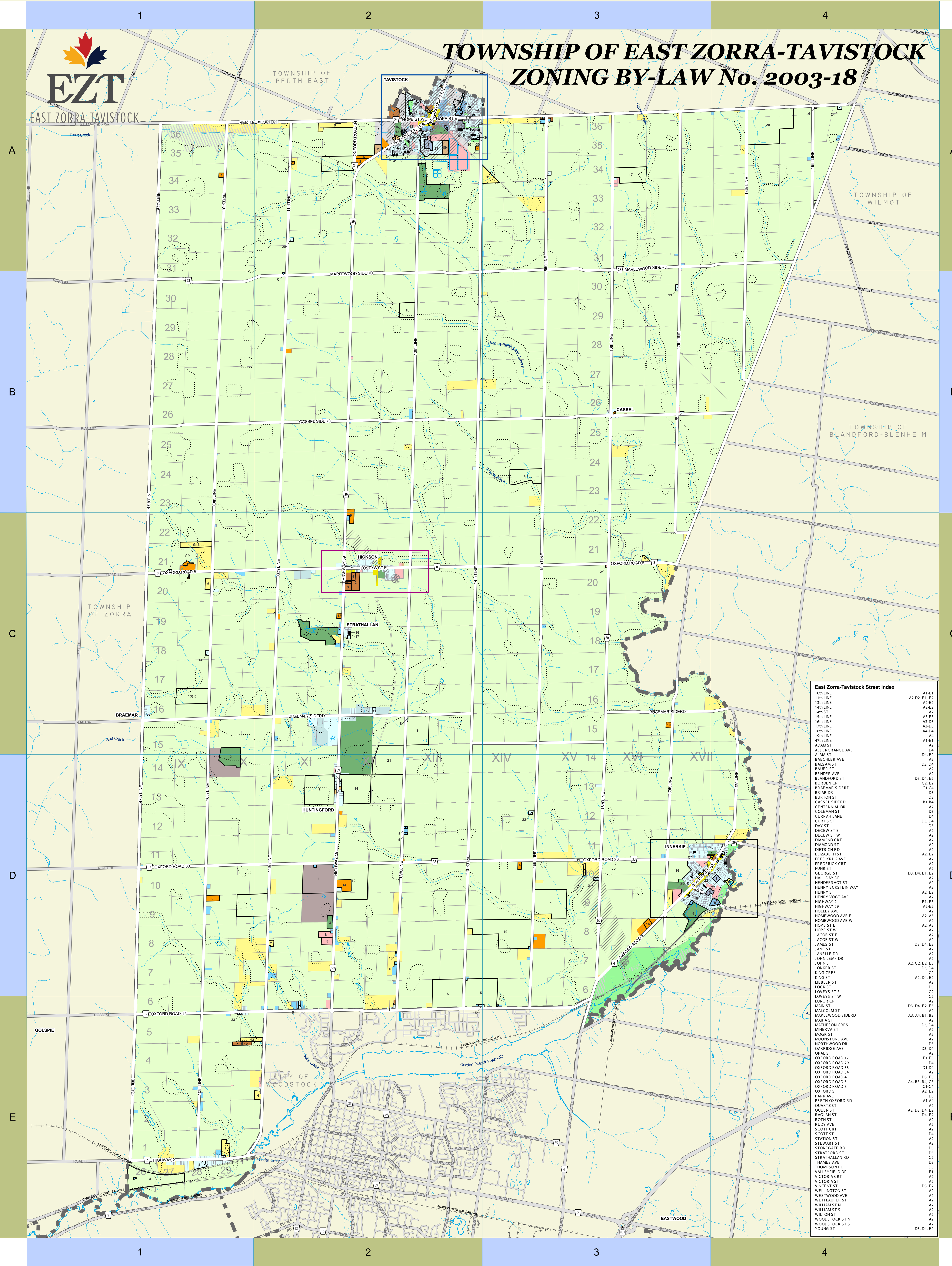


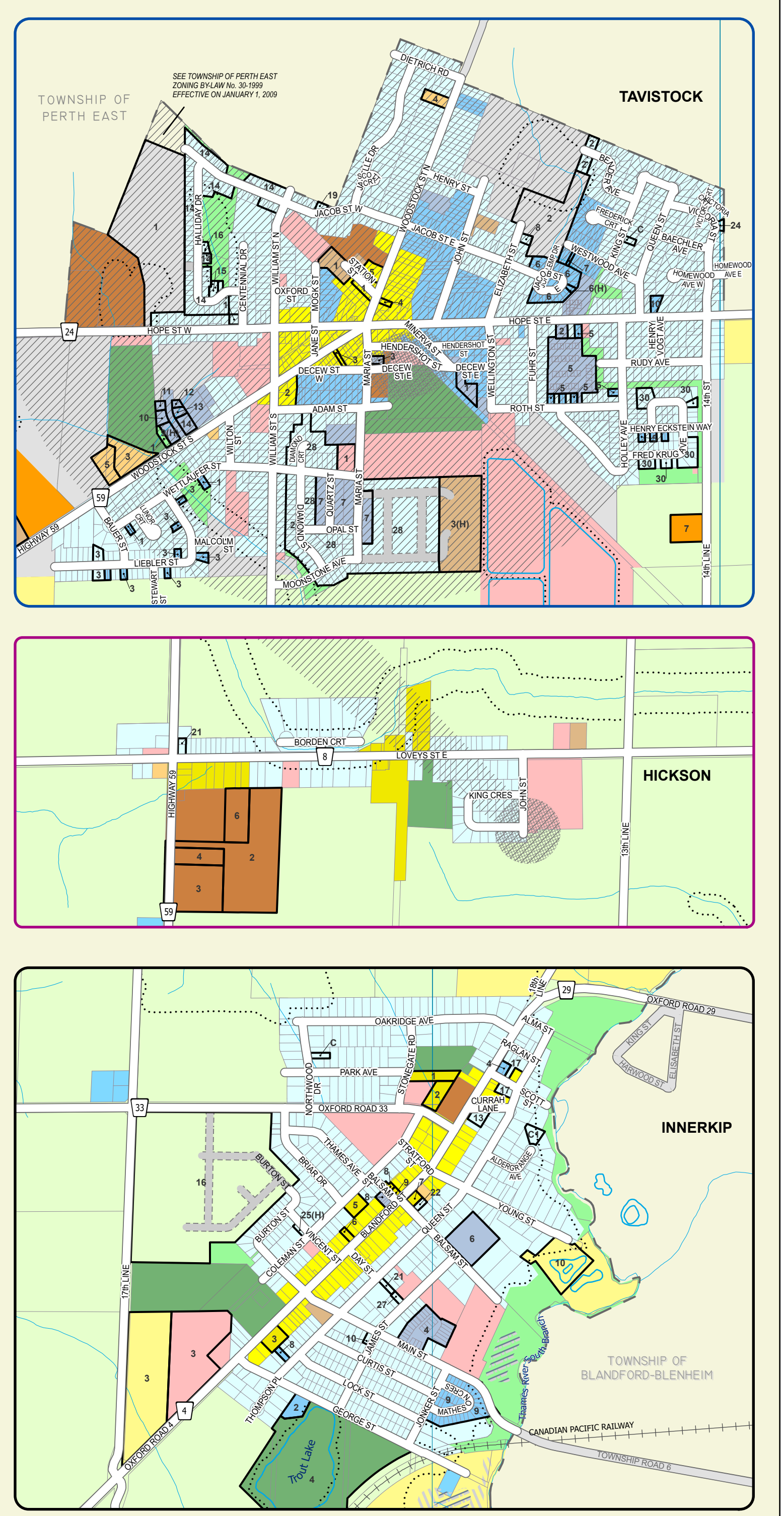


TOWNSHIP OF EAST ZORRA-TAVISTOCK ZONING BY-LAW No. 2003-18



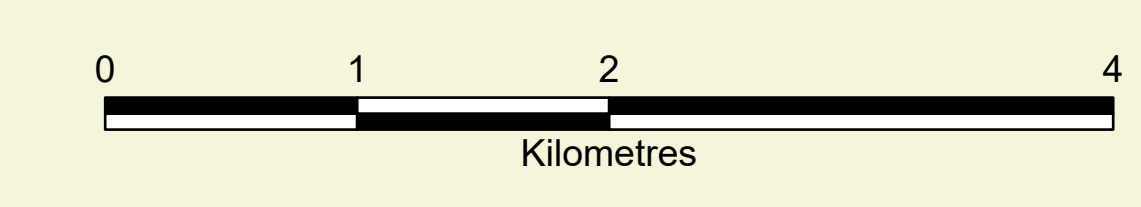
East Zorra-Tavistock Street Index

10th LINE	A1-E1
11th LINE	A2-D2, E1-E2
12th LINE	A2-E2
13th LINE	A2-E2
14th LINE	A2-E2
15th LINE	A2-E2
16th LINE	A2-E2
17th LINE	A2-E2
18th LINE	A2-E2
19th LINE	A2-E2
20th LINE	A2-E2
21st LINE	A2-E2
22nd LINE	A2-E2
23rd LINE	A2-E2
24th LINE	A2-E2
25th LINE	A2-E2
26th LINE	A2-E2
27th LINE	A2-E2
28th LINE	A2-E2
29th LINE	A2-E2
30th LINE	A2-E2
31st LINE	A2-E2
32nd LINE	A2-E2
33rd LINE	A2-E2
34th LINE	A2-E2
35th LINE	A2-E2
36th LINE	A2-E2
ADAM ST	A2
ALDERGRANGE AVE	D4
ALMA ST	A2-E2
BAEHLER AVE	D4
BALDWIN ST	D1-D4
BAUER ST	A2
BENDER AVE	A2
BLANDFORD ST	D3, D4, E2
BORDEN CRT	C2, E2
BREMAR SIDERO	C1-C4
BRIAR DR	D3
BURTON ST	D3
CASSEL SIDERO	B1-B4
CENTENNIAL DR	A2
COLEMAN ST	D3
CURRAH LANE	D4
CURTIS ST	D3, D4
DAY ST	D3
DECEW ST E	A2
DECEW ST W	A2
DIAMOND CRT	A2
DIAMOND ST	A2
DIETRICH RD	A2
ELIZABETH ST	A2, E2
FRED KRUG AVE	A2
FREDERICK CRT	D3, D4, E1, E2
FURH ST	A2
GEORGE ST	A2
HALLIDAY DR	A2
HENDERSHOT ST	A2
HENRY EASTERN WAY	A2
HENRY ST	A2
HENRY VOOE AVE	A2, E2
HIGHWAY 2	E1, E3
HIGHWAY 59	A2-E2
HOLLEY AVE	A2
HOMWOOD AVE E	A3, A3
HOMWOOD AVE W	A2
HOPE ST E	A2
HOPE ST W	A2
JACOB ST E	A2
JACOB ST W	A2
JAMES ST	D3, D4, E2
JANE ST	A2
JANELLE DR	A2
JOHN LEMP DR	A2, E2
JOHN ST	D3, D4
JONKER ST	A2
KING CRT	C2
KING ST	A2, D4, E2
LEBLER ST	D3
LOCK ST	D3
LOVEYS ST E	C2
LOVEYS ST W	C2
LUNOR CRT	D3, D4, E2, E3
MAIN ST	A2
MALCOLM ST	A3, A4, B1, B2
MAPLEWOOD SIDERO	A2
MARIE ST	D3, D4
MATHESON CRTS	A2
MINNEVA ST	A2
MOGK ST	D3
MOONSTONE AVE	D3, D4
NEWWOOD DR	D3
OAKRIDGE AVE	D3, D4
OPAL ST	E1-E3
OXFORD ROAD 17	D4
OXFORD ROAD 29	D4
OXFORD ROAD 33	D1-D4
OXFORD ROAD 34	D3
OXFORD ROAD 4	D3, E3
OXFORD ROAD 5	A4, B3, B4, C3
OXFORD ROAD 8	C1-C4
OXFORD ST	A2, E2
PARK AVE	D3
PERTH-OXFORD RD	A1-A4
QUARTZ ST	A2, D3, D4, E2
QUEEN ST	D4, E2
RAGLAN ST	A2
ROTH ST	A2
RUDY AVE	A2
SCOTT CRT	A2
SCOTT ST	D4
STATION ST	A2
STEWART ST	A2
STONEGATE RD	D3
STRATHALLAN ST	D3
STRATHALLAN RD	C2
THAMES AVE	D3
THOMPSON FL	D3
VALLEYFIELD DR	E1
VICTORIA CRT	A2
VICTORIA ST	A2
VINCENT ST	D3, E2
WELLINGTON ST	A2
WESTWOOD AVE	A2
WETTLAUFER ST	A2
WILLIAM ST N	A2
WILLIAM ST S	A2
WILTON ST	A2
WOODSTOCK ST N	A2
WOODSTOCK ST S	A2
YOUNG ST	D3, D4, E2



ZONING BY-LAW No. 2003-18

- RESIDENTIAL TYPE 1 (R1 ; R1H)
- RESIDENTIAL TYPE 2 (R2; R2(H))
- RESIDENTIAL TYPE 3 (R3)
- RESIDENTIAL EXISTING LOT (RE)
- RURAL RESIDENTIAL (RR)
- ESTATE RESIDENTIAL (ER)
- CENTRAL COMMERCIAL (CC)
- HIGHWAY COMMERCIAL (HC; HC(H))
- AGGREGATE INDUSTRIAL ZONE (ME)
- GENERAL INDUSTRIAL (MG)
- RESTRICTED INDUSTRIAL (MR)
- DEVELOPMENT (D)
- INSTITUTIONAL (I)
- OPEN SPACE (OS)
- RECREATIONAL (REC; REC(H))
- RESTRICTED AGRICULTURAL (A1)
- GENERAL AGRICULTURAL (A2; A2H)
- AGRICULTURAL BUSINESS (AB)
- VILLAGE (V)
- ENVIRONMENTAL PROTECTION 1 OVERLAY
See General Provisions 5.24.1
- ENVIRONMENTAL PROTECTION 2 OVERLAY
See General Provisions 5.24.2
- SOURCEWATER PROTECTION OVERLAY 1 (SP1)
See Section 5.28
- SOURCEWATER PROTECTION OVERLAY 2 (SP2)
See Section 5.28
- CONSERVATION AUTHORITY REGULATION LIMIT
See Section 2.8
- A, B, 2 SPECIAL ZONE PROVISIONS- REFER TO ZONING BY-LAW



LAST UPDATE: MARCH, 2026
DATA MAY BE SUBJECT TO LICENSE.

COPYRIGHT FOR INTELLECTUAL PROPERTY BELONGS WITH THE SOURCE AGENCY. OXFORD COUNTY MAKES THIS DATA AVAILABLE WITHOUT WARRANTY OF ANY KIND, EXPRESSED OR IMPLIED.

THIS DOCUMENT MAY NOT BE REPRODUCED WITHOUT WRITTEN PERMISSION. FOR MORE INFORMATION, PLEASE CONTACT COUNTY OF OXFORD INFORMATION SERVICES AT GIS@OXFORDCOUNTY.CA

FOR ACCURATE REFERENCE RECOURSE SHOULD BE HAD TO THE BY-LAW AND SUBSEQUENT AMENDMENTS.

