



2018 ANNUAL DRINKING WATER SYSTEM SUMMARY REPORT Mount Elgin Water System

1. GENERAL INFORMATION

Oxford County prepares a report summarizing system operation and water quality for every municipal drinking water system annually. The reports detail the latest water quality testing results, water quantity statistics and any adverse conditions that may have occurred for the previous year. They are available for review by the end of February on the Oxford County website at www.oxfordcounty.ca/drinkingwater or by contacting the Public Works Department.

All efforts have been made to ensure the information presented in this report is accurate. If you have any questions or comments concerning the report please contact the County of Oxford at the address and phone number listed below or by email at publicworks@oxfordcounty.ca.

Drinking Water System:	Mount Elgin Water System
Drinking Water System Number:	220000629
Drinking Water System Owner & Contact Information:	Oxford County Public Works Department Water Services P.O. Box 1614 21 Reeve Street Woodstock, ON N4S 7Y3 Telephone: 519-539-9800 Toll Free: 866-537-7778 Email: publicworks@oxfordcounty.ca
Reporting Period:	January 1, 2018 – December 31, 2018

1.1. System Description

The Mount Elgin Water System is a Large Municipal Water system as defined by Regulation 170/03 and serves a population of approximately 603. The system consists of one groundwater well and a treatment facility. The water is treated with sodium hypochlorite (liquid chlorine) for disinfection and in 2018 approximately 1.7 m³ of the chemical was used in the water treatment process. The chemical is certified to meet standards set by the Standards Council of Canada or American National Standards Institute.

The treatment facility houses pumps, monitoring equipment, and a 380 m³ underground reservoir. A standby generator is available to run the facility in the event of a power failure. The system is maintained by licensed water system operators, who operate treatment and monitoring equipment and collect samples as specified by the Regulation. Alarms automatically notify operators in the event of a failure of critical operational requirements.

1.2. Major Expenses

The Mount Elgin Water System is one of 14 water systems that have revenues and expenses pooled for economy of scale purposes. The systems are combined into the Township Water financial system and in 2018 had forecasted operating and maintenance expenditures of approximately \$2,900,000.

In addition to regular operations and maintenance for all water systems, capital improvement projects included:

- \$130,000 to develop a Countywide SCADA Master Plan
- \$58,000 on Asset Management valuation of all treatment, pumping and storage facilities
- \$80,000 on design and engineering treatment options for a new Mount Elgin supply well

2. MICROBIOLOGICAL TESTING

2.1. *E. coli* and Total Coliform

Bacteriological tests for *E. coli* and total coliforms are required weekly from the raw and treated water at the facility and from the distribution system. Extra samples are taken after major repairs or maintenance work. Any *E. coli* or total coliform results above 0 in treated water must be reported to the Ministry of the Environment, Conservation and Parks (MECP) and Medical Officer of Health (MOH). Resamples and any other required actions are taken as quickly as possible. The results from the 2018 sampling program are shown on the table below. There were no adverse test results from 156 treated water samples in this reporting period.

	<i>Number of Samples</i>	<i>Range of E. coli Results Min - Max MAC = 0</i>	<i>Range of Total Coliform Results Min - Max MAC = 0</i>
Raw	52	0 - 0	0 - 0
Treated	52	0 - 0	0 - 0
Distribution	104	0 - 0	0 - 0

2.2. *Heterotrophic Plate Count (HPC)*

HPC analyses are required from the treated and distribution water. The tests are required weekly for treated water and for 25% of the required distribution system bacteriological samples. The HPC should be less than 500 colonies per 1 mL. Results over 500 colonies per 1 mL may indicate a change in water quality but it is not considered an indicator of unsafe water. 2018 results are shown in the table below.

	<i>Number of Samples</i>	<i>Range of HPC Min - Max</i>
Treated	52	0 - 1
Distribution	24	0 - 79

3. CHEMICAL TESTING

The Safe Drinking Water Act requires periodic testing of the water for approximately 60 different chemical parameters. The latest results for all parameters are provided in Appendix A. The sampling frequency varies for different types and sizes of water systems and chemical parameters. If the concentration of a parameter is above half of the Maximum Allowable Concentration (MAC) under the Ontario Drinking Water Quality Standards, an increased testing frequency of once every three months is required by the Regulation. Where concerns regarding a parameter exist, the MECP can also require additional sampling be undertaken.

Information on the health effects and allowable limits of components in drinking water may be found on the MECP web page through the link provided in Appendix A. Additional information on common chemical parameters specific to the Mount Elgin system is provided below.

3.1. Hardness

This is an aesthetic parameter that may affect the appearance of the water but is not related to health. Well water commonly has high levels of hardness and other minerals from being in contact with underground rock formations. Many households have water softeners to help reduce white calcium deposits and improve the efficiency of soaps. This information is included here to help set the water softener at the level recommended by the manufacturer. The Hardness in the Mount Elgin System is 233 mg/L (equivalent to 17 grains).

3.2. Additional Testing Required by MECP

None.

4. OPERATIONAL MONITORING

4.1. Chlorine Residual

Free chlorine levels of the treated water are monitored continuously at the discharge point of the Water Treatment Facility. In the distribution system, free chlorine is checked twice weekly at various locations. As a target, free chlorine residual within the distribution system should be above 0.20 mg/L. A free chlorine level lower than 0.05 mg/L must be reported and corrective action taken. There were no reportable incidents in 2018. A summary of the chlorine residual readings is provided in the table below.

4.2. Turbidity

Turbidity of treated water is continuously monitored at the treatment facility, as a change in turbidity can indicate an operational problem. The turbidity of untreated water from the well is checked weekly. Turbidity is measured in nephelometric turbidity units (NTU). Under Regulation 170/03 turbidity in groundwater is not reportable however turbidity should be < 1 NTU at the treatment plant and < 5 NTU in the distribution system. A summary of the monitoring results for 2018 is provided in the table below.

<i>Parameter</i>	<i>Number of Tests or Monitoring Frequency</i>	<i>Range of Results (Min – Max) and Average</i>
Chlorine residual in distribution (mg/L)	106	(0.68 – 1.40) 1.13
Chlorine residual after treatment (mg/L)	Continuous	(0.47 – 2.12) 1.17
Turbidity after treatment (NTU)	Continuous	(0.07 – 3.38) 0.17

5. WATER QUANTITY

Continuous monitoring of flow rates from supply wells into the treatment system and from the facility into the distribution system is required by Regulation 170/03. The Municipal Drinking Water License and Permit to Take Water issued by the MECP regulate the amount of water that can be utilized over a given time period. A summary of the 2018 flows are provided in the Table below and presented graphically in Appendix B.

<i>Flow Summary</i>	<i>Quantity</i>
Permit to Take Water Limit	328 m ³ /d
Municipal Drinking Water License Limit	328 m ³ /d
2018 Average Daily Flow	116 m ³ /d
2018 Maximum Daily Flow	259 m ³ /d
2018 Average Monthly Flow	3,517 m ³
2018 Total Amount of Water Supplied	42,207 m ³

To accommodate future growth, a new treatment facility is anticipated to be constructed in 2019/2020. Once this facility is operational there will be sufficient supply capacity to meet the community's long term growth needs.

6. NON-COMPLIANCE FINDINGS AND ADVERSE RESULTS

This section documents any known incidents of non-compliance or adverse results and the associated correction actions taken to resolve the issue. Non-compliance issues are typically identified by either the Operating Authority or the MECP Drinking Water Inspectors. The issues and associated required actions are documented by the Inspectors in the system's Annual Inspection Report. All non-compliance issues are investigated, corrective actions taken and documented using the County's Drinking Water Quality Management System (DWQMS) procedures.

6.1. Non-Compliance Findings

The annual MECP inspection took place in June 2018. There were no non-compliance findings and the 2018 Inspection Report rating was 100%.

6.2. Adverse Results

There were no adverse or reportable occurrences in 2018.

APPENDIX A: SUMMARY OF CHEMICAL RESULTS

UNDERSTANDING CHEMICAL TEST RESULTS

The following tables summarize the laboratory results of the chemical testing Oxford County is required to complete. Different types of parameters are required to be tested for at different frequencies as noted below. Explanations on the health impacts of these parameters can be found at the MECP web site <http://www.ontla.on.ca/library/repository/mon/14000/263450.pdf> document # 4449e01 titled "Technical Support Document for Ontario Drinking Water Standards, Objectives and Guidelines".

Results are shown as concentrations with units of either milligrams per litre (mg/L) or micrograms per litre (ug/L). 1 mg/L is equal to 1000 ug/L. The Maximum Acceptable Concentration (MAC) is the highest amount of a parameter that is acceptable in Municipal drinking water and can be found in the MECP Drinking Water Standards. The Method Detection Limit (MDL) is the lowest amount to which the laboratory can confidently measure. A result of "ND" stands for "Not Detected" and means that the concentration of the chemical is lower than the laboratory's equipment is capable of measuring.

Nitrate and nitrate samples are required every 3 months in normal operation.

<i>Parameter</i>	<i>Result Range Min – Max (mg/L)</i>	<i>Average Result (mg/L)</i>	<i>MAC (mg/L)</i>	<i>MDL (mg/L)</i>
Nitrite	ND – 0.004	0.003	1.0	0.003
Nitrate	ND – 0.014	0.011	10.0	0.006

Trihalomethane (THM) and total Haloacetic Acids (HAA) are by-products of the disinfection process. The samples are required every 3 months from the distribution system.

<i>Parameter</i>	<i>Annual Average</i>	<i>Result Value (ug/L)</i>	<i>MAC (ug/L)</i>	<i>MDL (ug/L)</i>
Trihalomethane (THM)	2018	10.1	100	0.37
Haloacetic Acids (HAA)	2018	ND	80	5.3

The following Table summarizes the most recent test results for Sodium and Fluoride. Testing and reporting any adverse results is required every 5 years.

<i>Parameter</i>	<i>Sample Date</i>	<i>Result Value (mg/L)</i>	<i>MAC (mg/L)</i>	<i>MDL (mg/L)</i>
Sodium	Mar 17, 2014	19.7	20.0*	0.01
Fluoride	"	1.34	1.5**	0.06

*Sodium levels between 20 – 200 mg/L must be reported every 5 years.

**Natural levels of fluoride between 1.5 – 2.4 mg/L must be reported every 5 years.

The following Table summarizes the most recent results for the Lead Testing Program. Lead samples are taken every 3 years. Levels of alkalinity and pH are monitored twice per year in the distribution system to ensure water quality is consistent and does not facilitate leaching of lead into the water.

<i>Parameter</i>	<i>Result Range (Min – Max)</i>	<i>Number of Samples</i>	<i>Acceptable Level</i>
Distribution Alkalinity	217 – 230	2	30 – 500mg/L
Distribution pH	7.3 – 7.4	2	6.5 – 8.5
Distribution Lead 2018	0.13 – 0.15	2	10 ug/L MAC

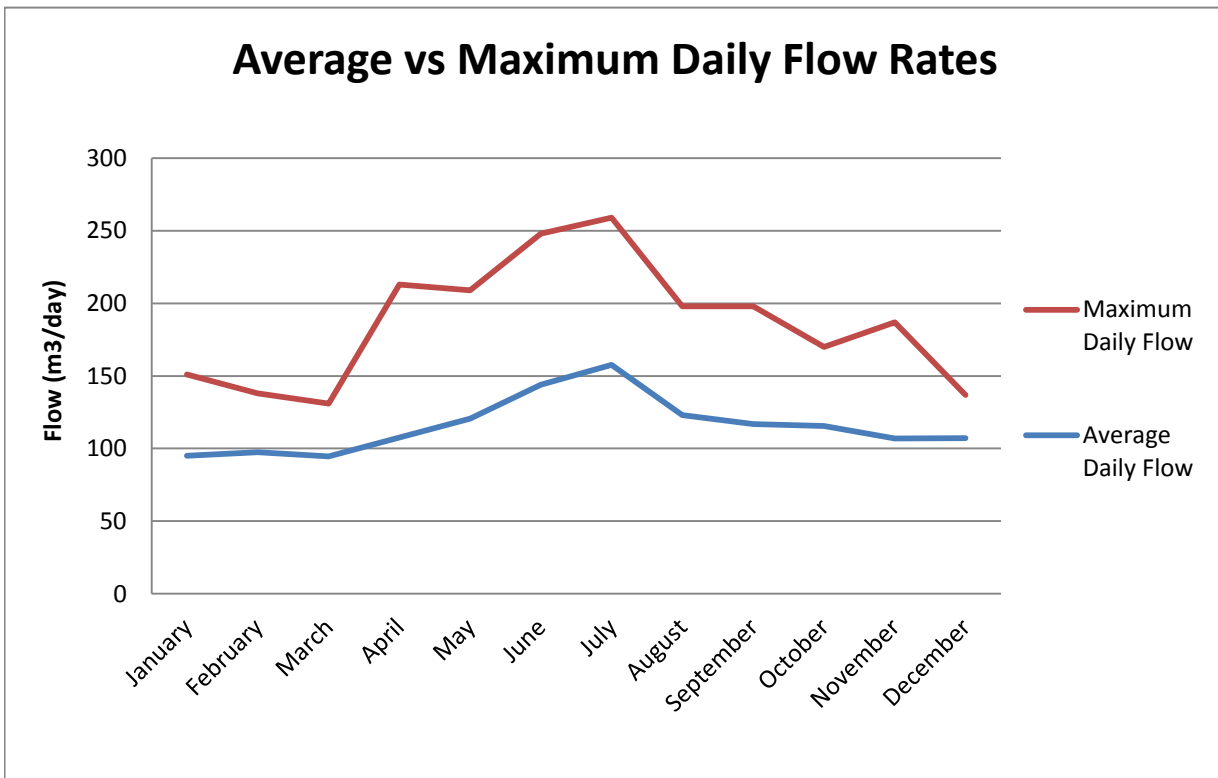
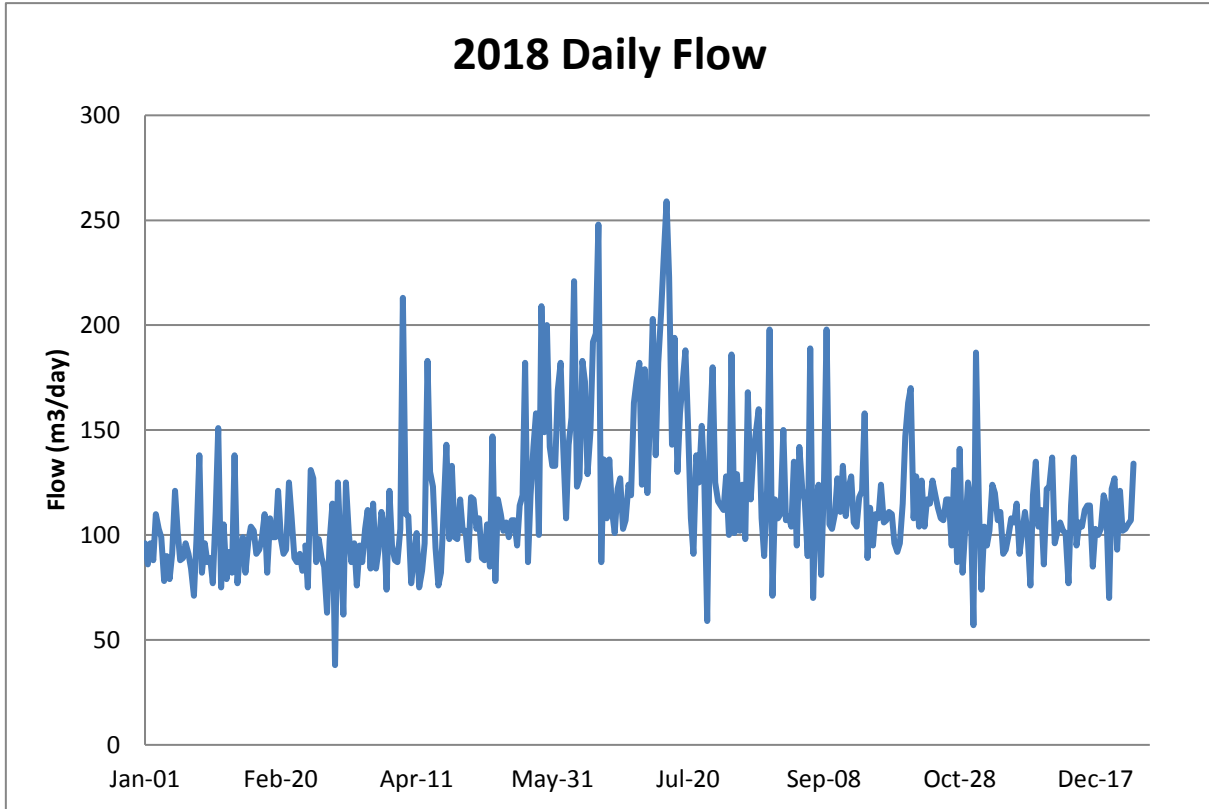
The following Table summarizes the most recent test results for Schedule 23. Testing is required every 3 years for secure groundwater wells.

<i>Parameter</i>	<i>Sample Date</i>	<i>Result Value (ug/L)</i>	<i>MAC (ug/L)</i>	<i>MDL (ug/L)</i>
Antimony	Feb 27, 2017	0.03	6	0.02
Arsenic	"	ND	10	0.2
Barium	"	146	1000	0.01
Boron	"	107	5000	2
Cadmium	"	0.003	5	0.003
Chromium	"	0.83	50	0.03
Mercury	"	ND	1	0.01
Selenium	"	ND	5	0.04
Uranium	"	0.016	20	0.002

The following Table summarizes the most recent test results for the Organic parameters in Schedule 24. Testing is required every 3 years for secure groundwater wells.

<i>Parameter</i>	<i>Sample Date</i>	<i>Result Value (ug/L)</i>	<i>MAC (ug/L)</i>	<i>MDL (ug/L)</i>
Alachlor	Feb 27, 2017	ND	5	0.02
Atrazine + N-dealkylatedmetabolites	"	ND	5	0.01
Azinphos-methyl	"	ND	20	0.01
Benzene	"	ND	1	0.32
Benzo(a)pyrene	"	ND	0.01	0.004
Bromoxynil	"	ND	5	0.33
Carbaryl	"	ND	90	0.05
Carbofuran	"	ND	90	0.01
Carbon Tetrachloride	"	ND	2	0.16
Chlorpyrifos	"	ND	90	0.02
Chlorpyrifos	"	ND	90	0.02
Diazinon	"	ND	20	0.02
Dicamba	"	ND	120	0.20
1,2-Dichlorobenzene	"	ND	200	0.41
1,4-Dichlorobenzene	"	ND	5	0.36
1,2-Dichloroethane	"	ND	5	0.35
1,1-Dichloroethylene (vinylidene chloride)	"	ND	14	0.33
Dichloromethane	"	ND	50	0.35
2-4 Dichlorophenol	"	ND	900	0.15
2,4-Dichlorophenoxy acetic acid (2,4-D)	"	ND	100	0.19
Diclofop-methyl	"	ND	9	0.40
Dimethoate	"	ND	20	0.03
Diquat	"	ND	70	1
Diuron	"	ND	150	0.03
Glyphosate	"	ND	280	1
Malathion	"	ND	190	0.02
2-methyl-4chlorophenoxyacetic acid (MCPA)	"	ND	100	0.12
Metolachlor	"	ND	50	0.01
Metribuzin	"	ND	80	0.02
Monochlorobenzene	"	ND	80	0.30
Paraquat	"	ND	10	1
Pentachlorophenol	"	ND	60	0.15
Phorate	"	ND	2	0.01
Picloram	"	ND	190	1
Polychlorinated Biphenyls(PCB)	"	ND	3	0.04
Prometryne	"	ND	1	0.03
Simazine	"	ND	10	0.01
Terbufos	"	ND	1	0.01
Tetrachloroethylene	"	ND	10	0.35
2,3,4,6-Tetrachlorophenol	"	ND	100	0.14
Triallate	"	ND	230	0.01
Trichloroethylene	"	ND	5	0.43
2,4,6-Trichlorophenol	"	ND	5	0.25
Trifluralin	"	ND	45	0.02
Vinyl Chloride	"	ND	1	0.17

APPENDIX B: 2018 WATER QUANTITY SUMMARY



Mount Elgin Water System Capacity 328 m³/day