

Appendix II: Individual Voronoi maps for Existing Level 1, Level 2, Level 3, and Tesla chargers in Oxford County

The Charging Index, formulated to quantify the charging ability of a particular EVSE location, As previously mentioned.

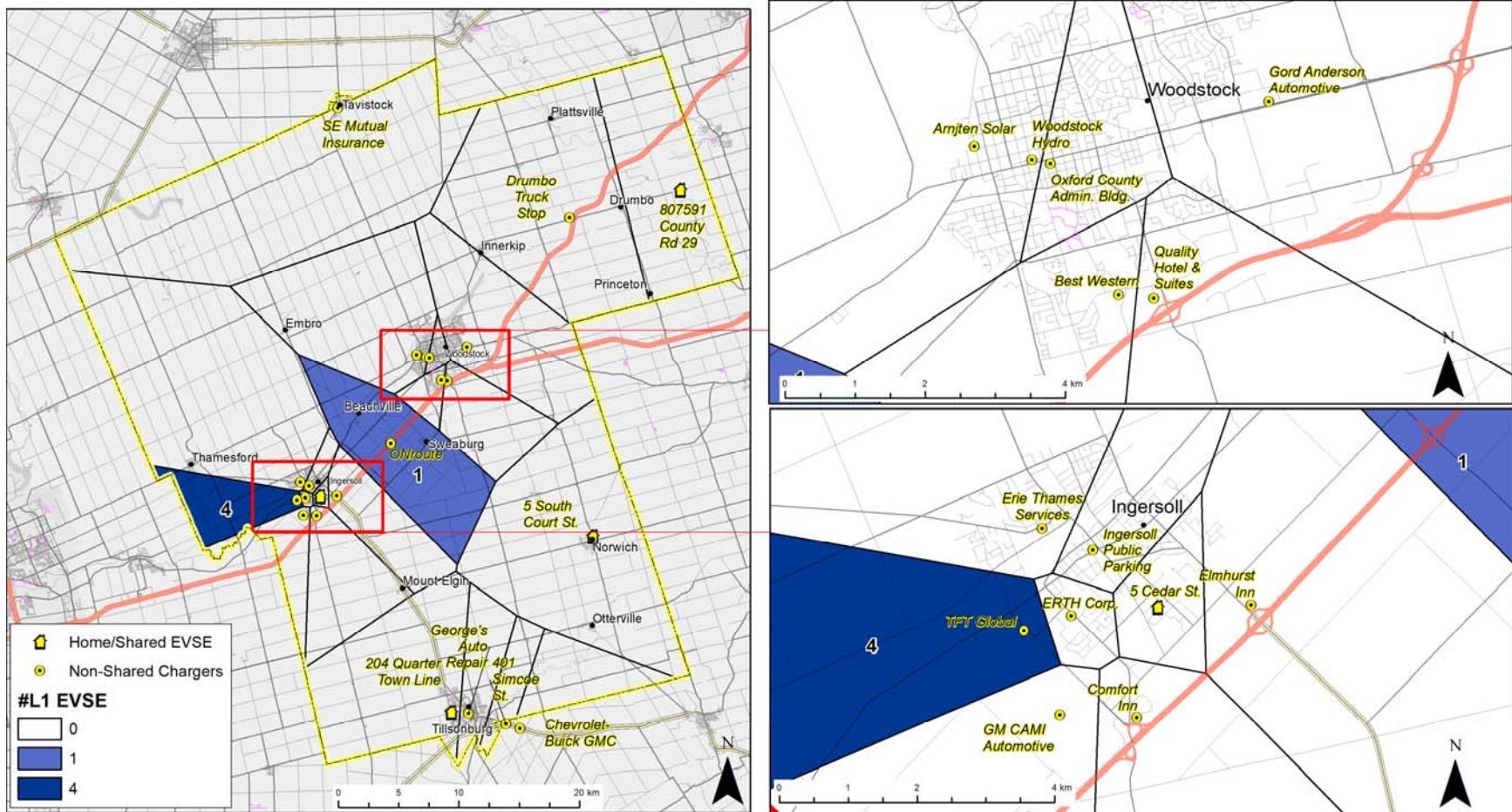


Figure VII: Voronoi polygon representation of L1 EVSE catchments. Polygon numbers and colours correspond to the number of L1 chargers at the nearest EVSE installation.

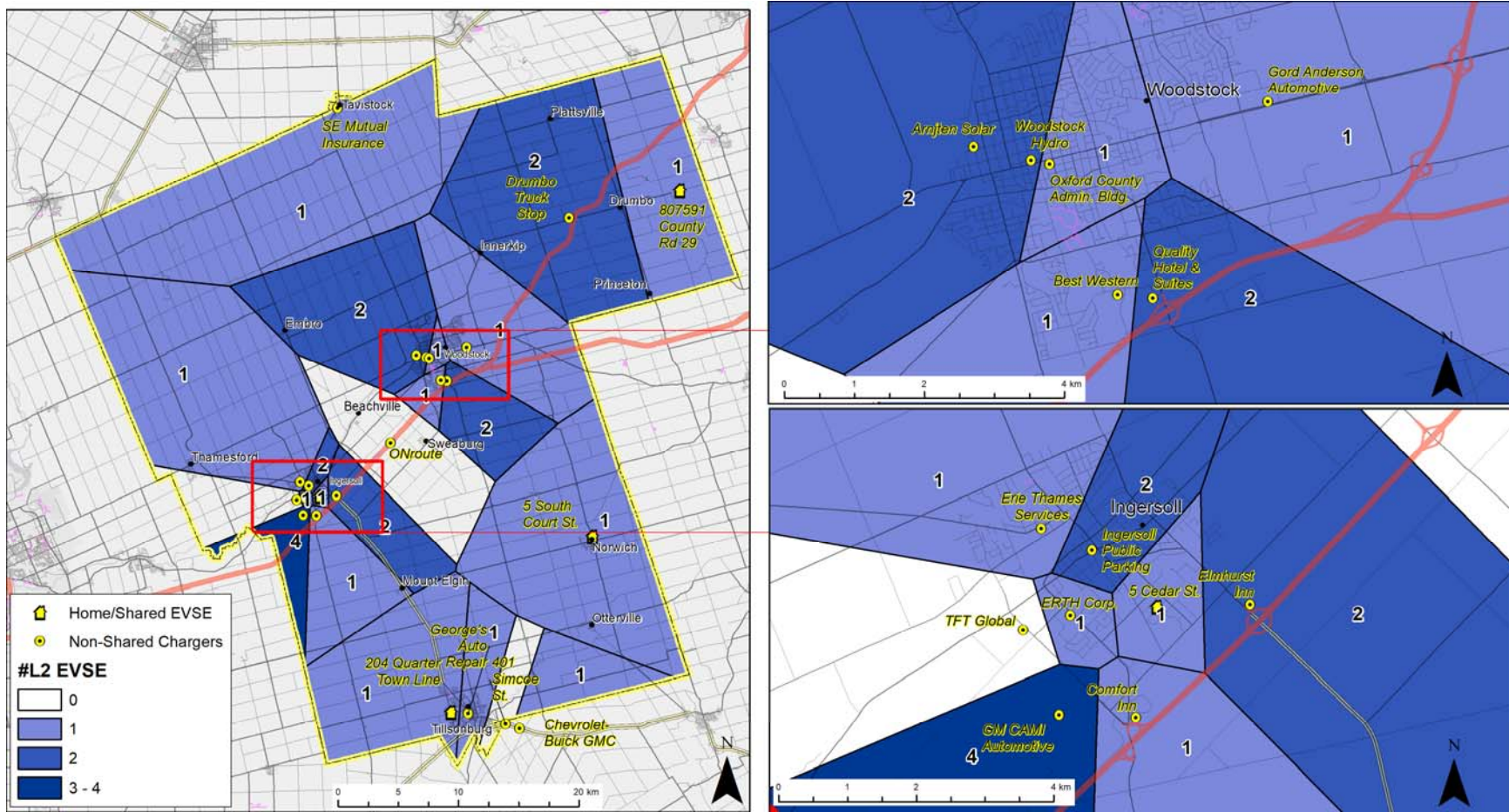


Figure VIII: Voronoi polygon representation of L2 EVSE catchments. Polygon numbers and colours correspond to the number of L2 chargers at the nearest EVSE installation.

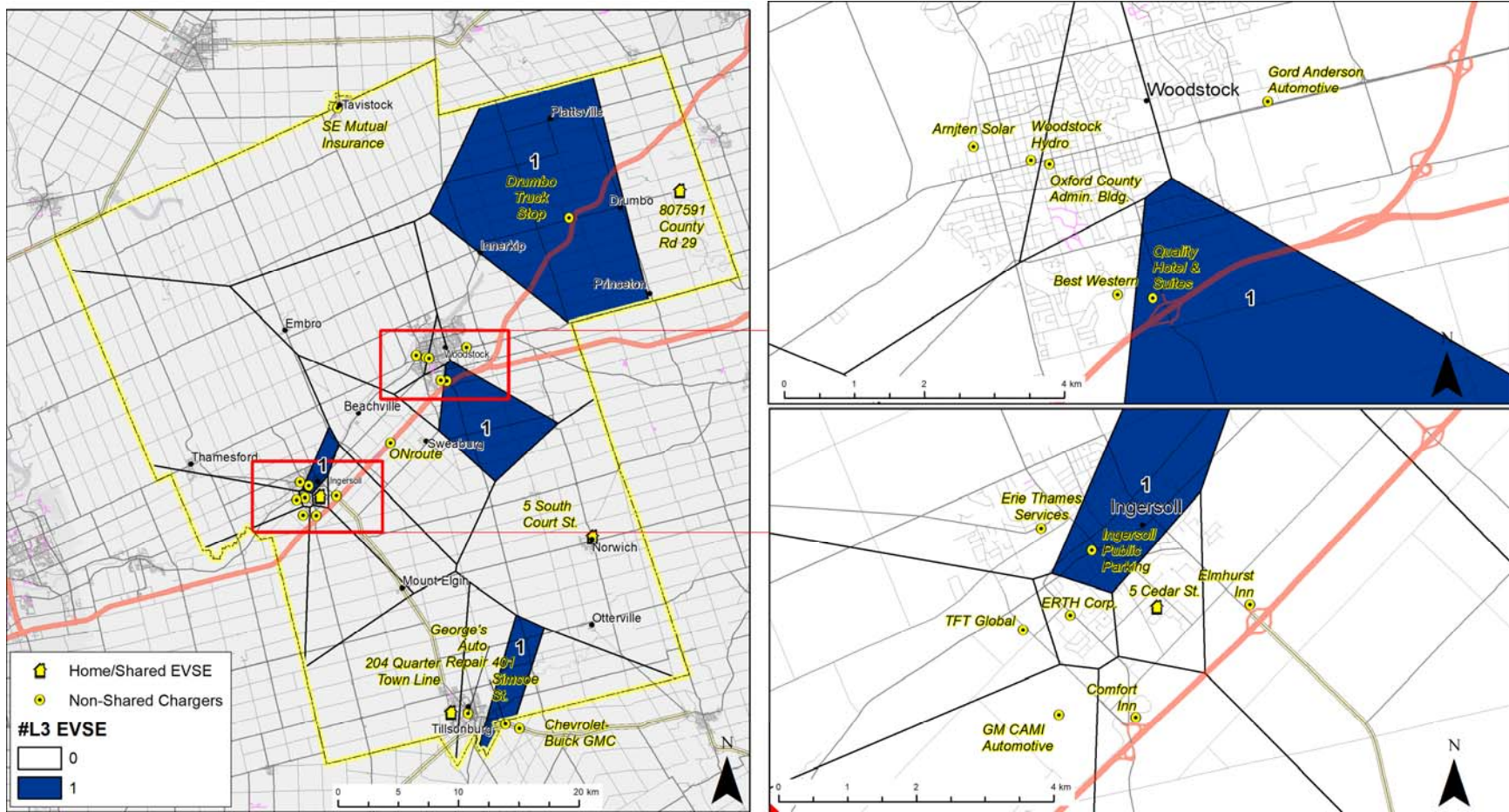


Figure IX: Voronoi polygon representation of L3 EVSE catchments. Polygon numbers and colours correspond to the number of L3 chargers at the nearest EVSE installation.

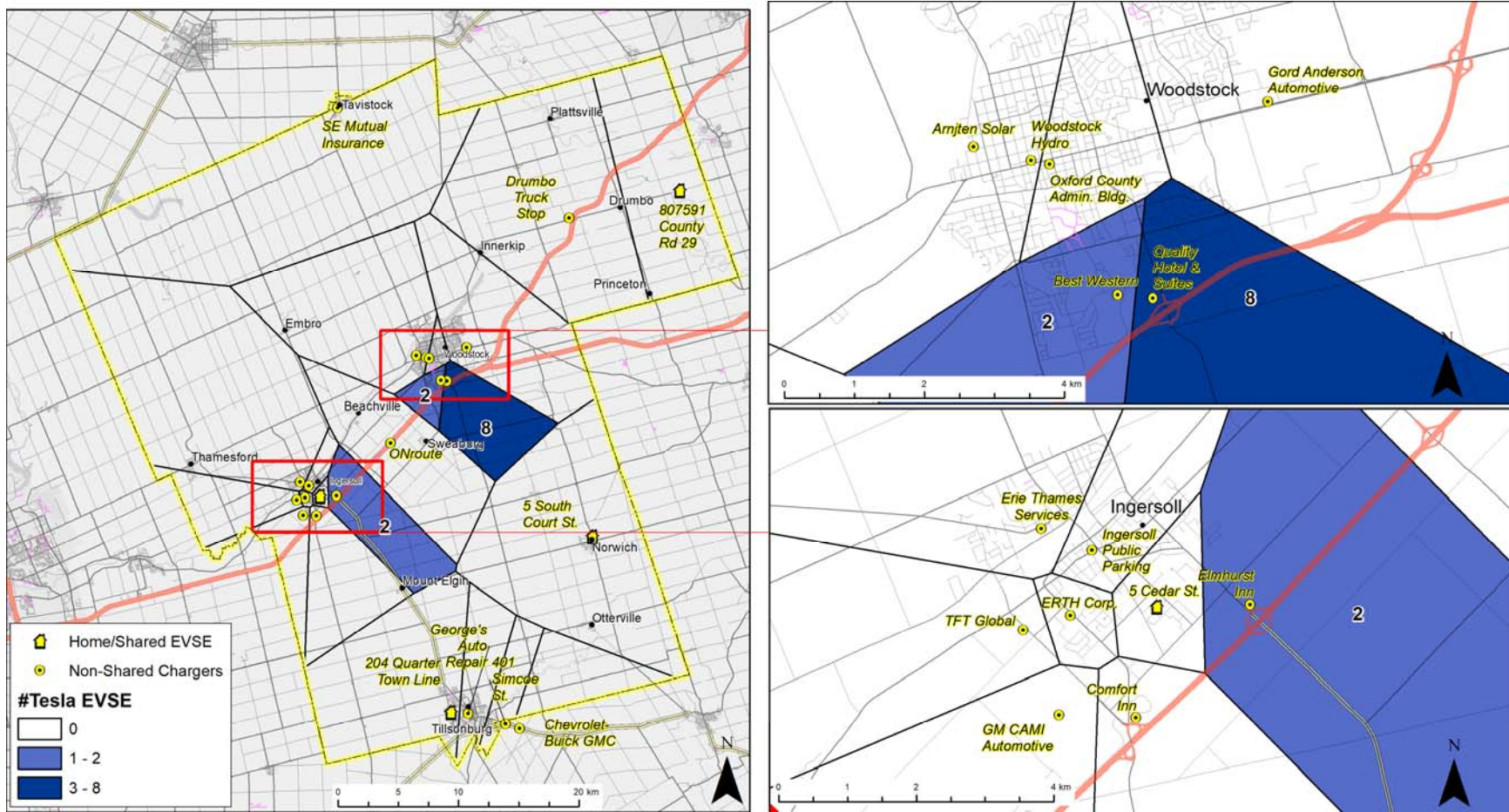


Figure X: Voronoi polygon representation of Tesla EVSE catchments. Polygon numbers and colours correspond to the number of Tesla chargers at the nearest EVSE installation.