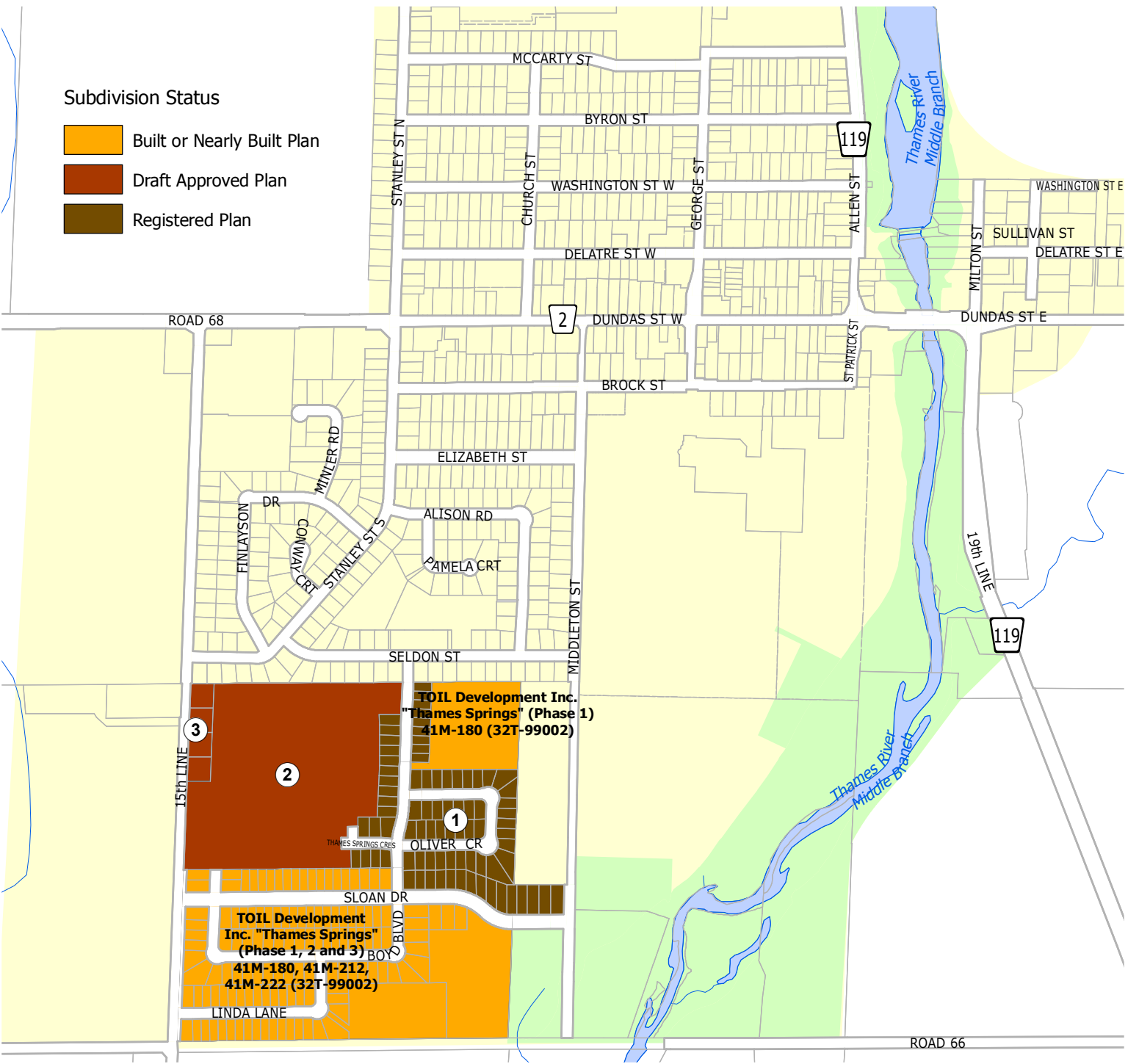


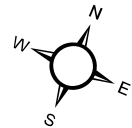
Residential Development Activity Village of Thamesford

Subdivision Status

- Built or Nearly Built Plan
- Draft Approved Plan
- Registered Plan



- | | | |
|--|--|--|
| <p>1. Toil Development Inc.
"Thames Springs"
(13.38 acres)
41M-249
(32T-05002, 32T-99002)
(Phase 4)
55 Single Detached</p> | <p>2. Toil Development Inc.
"Thames Springs"
32T-99002
(26.15 acres)
SB12-07-05
86 Single Detached
3 Blocks Multi-Residential</p> <p>41M-303 (32T-99002)
(5.34 acres)
26 Single Detached</p> | <p>3. Loy-El Sloan Development Inc.
(1.83 acres)
SB10-04-5
9 Single Detached</p> |
|--|--|--|



LAST UPDATE: February, 2016

