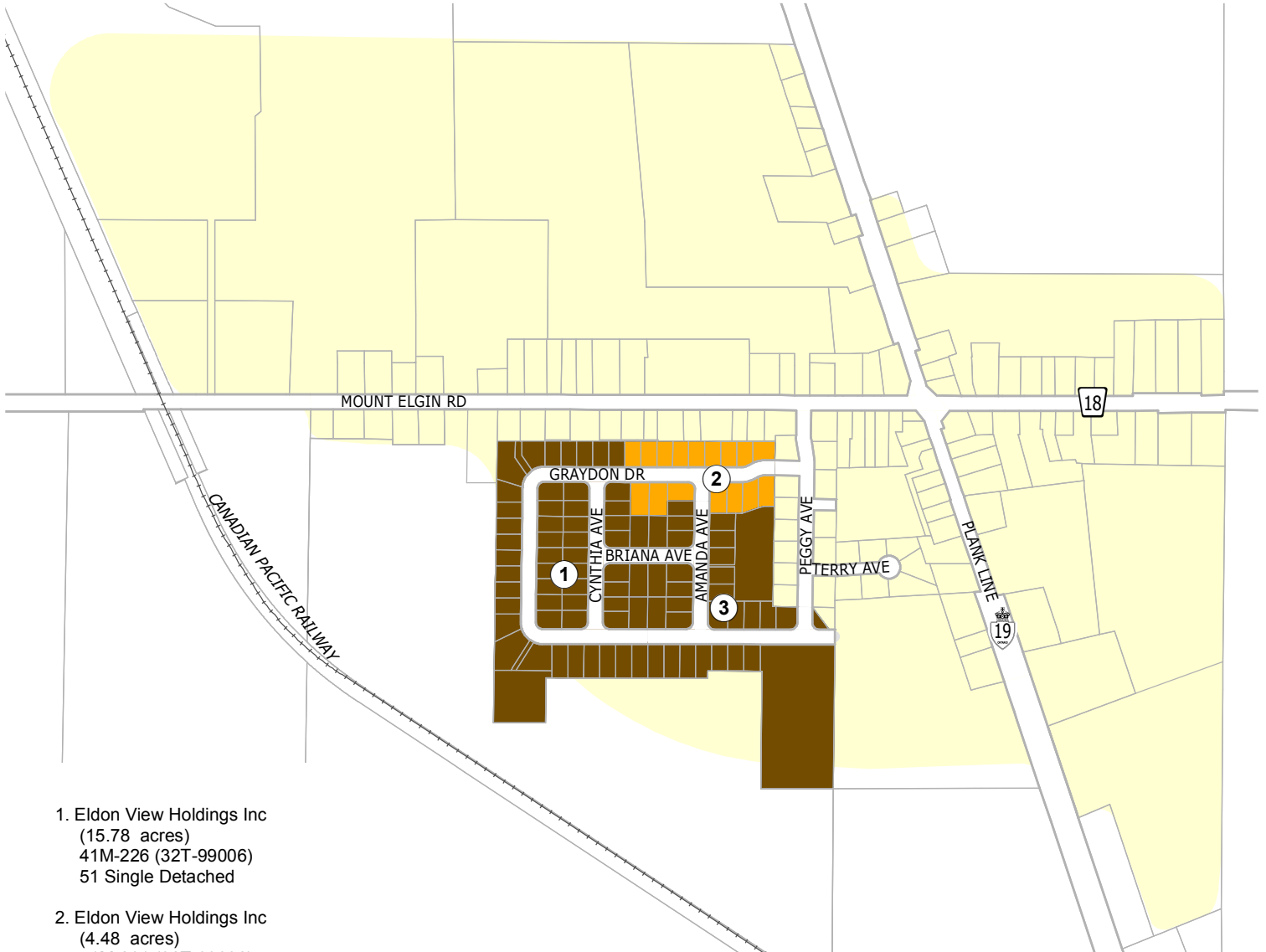


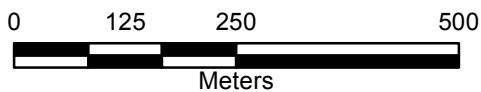
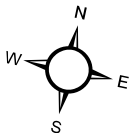
# Residential Development Activity Village of Mount Elgin



- 1. Eldon View Holdings Inc  
(15.78 acres)  
41M-226 (32T-99006)  
51 Single Detached
  
- 2. Eldon View Holdings Inc  
(4.48 acres)  
41M-201 (32T-99006)  
15 Single Detached
  
- 3. Eldon View Holdings Inc  
(15.37 acres)  
32T-99006  
29 Single Detached  
1 Future Residential block

### Subdivision Status

- Built or Nearly Built Plan
- Circulated or Submitted Plan
- Draft Approved Plan
- Registered Plan



LAST UPDATE: February, 2016