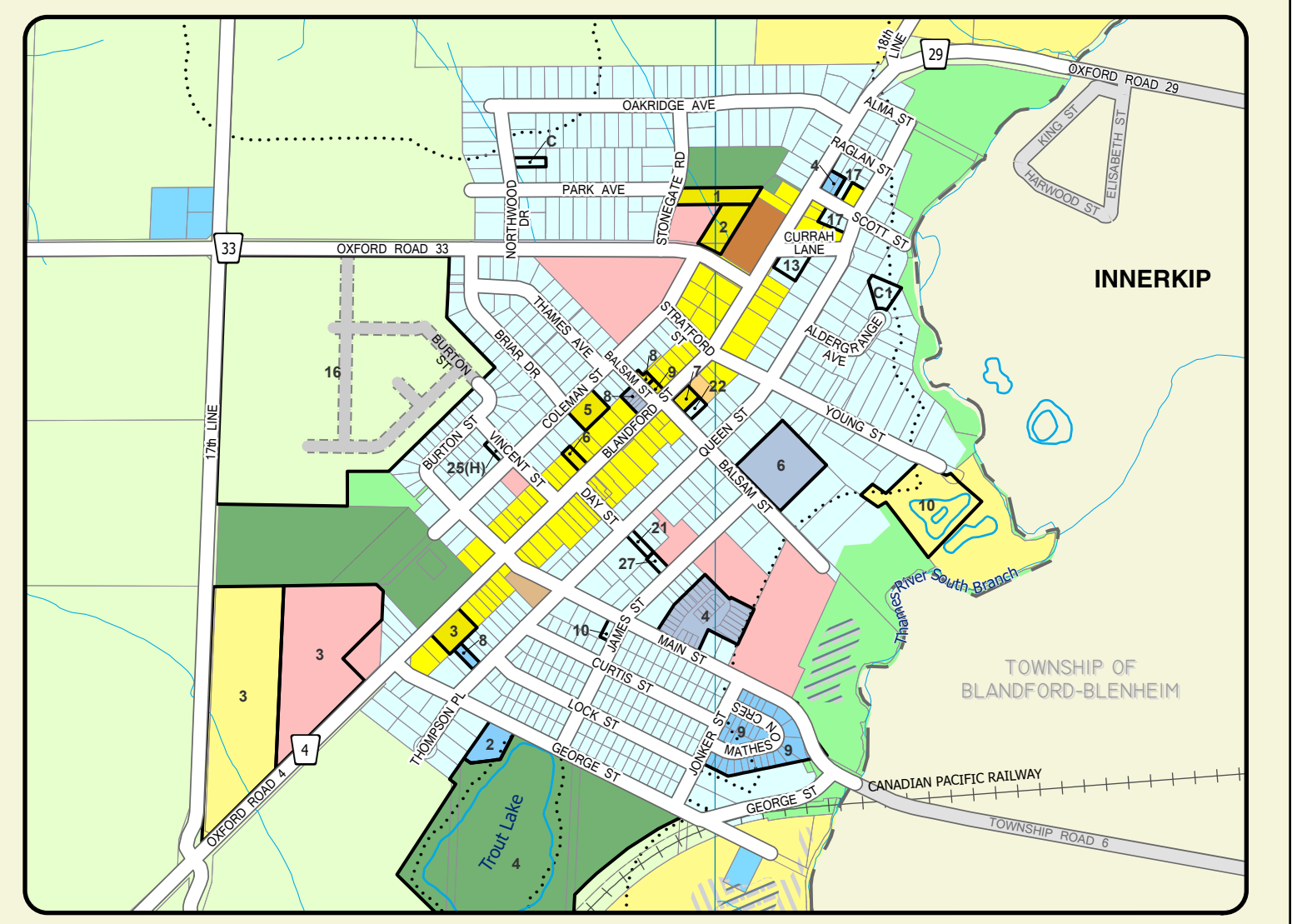
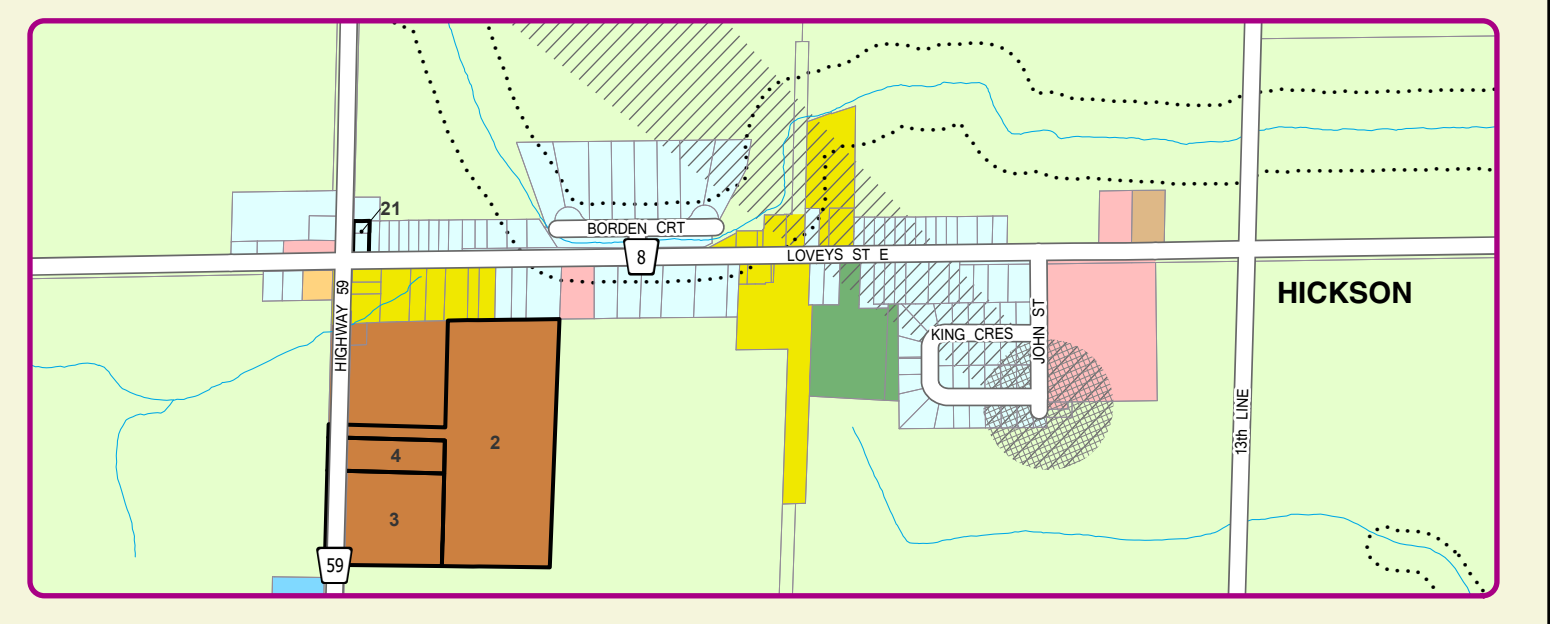
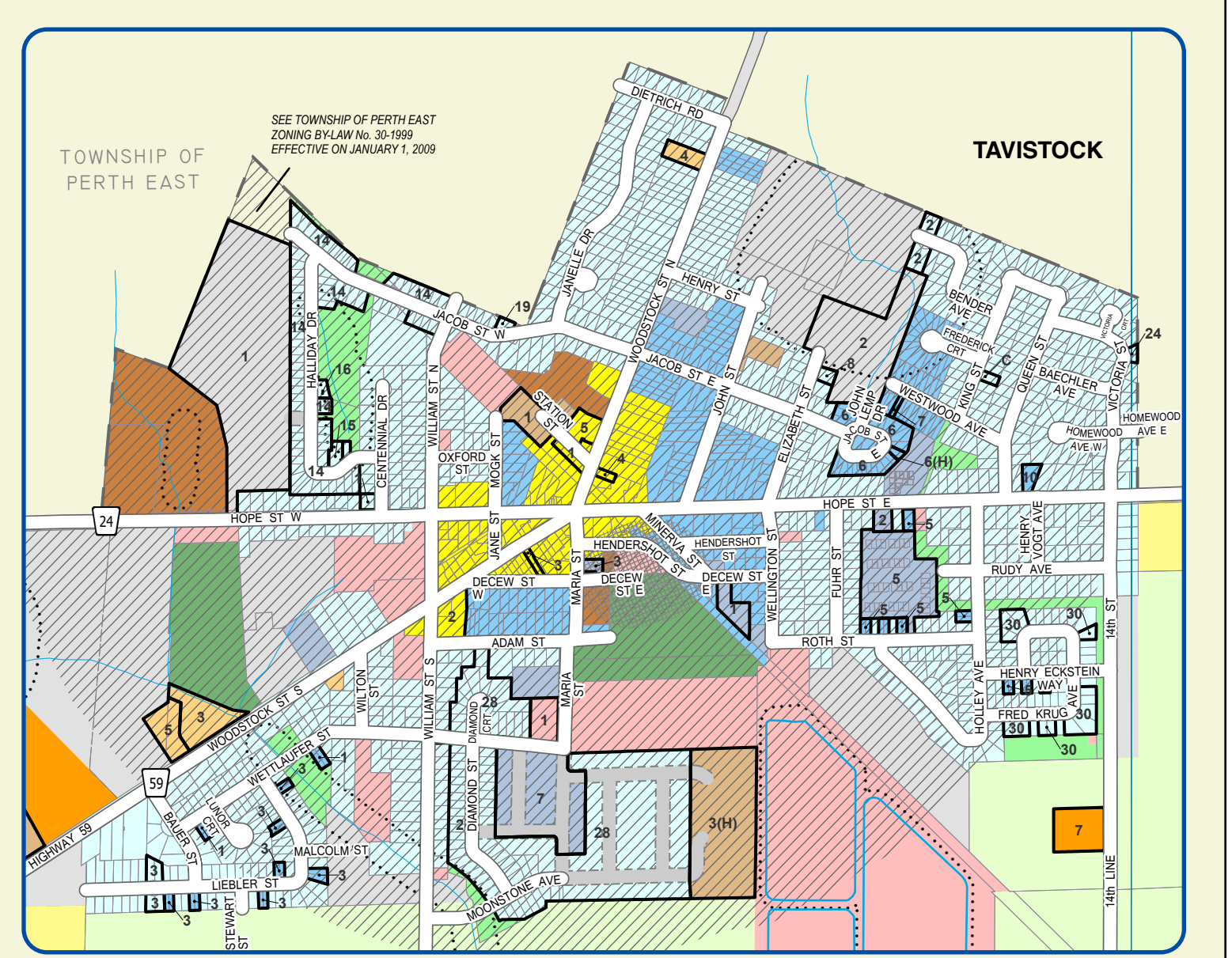
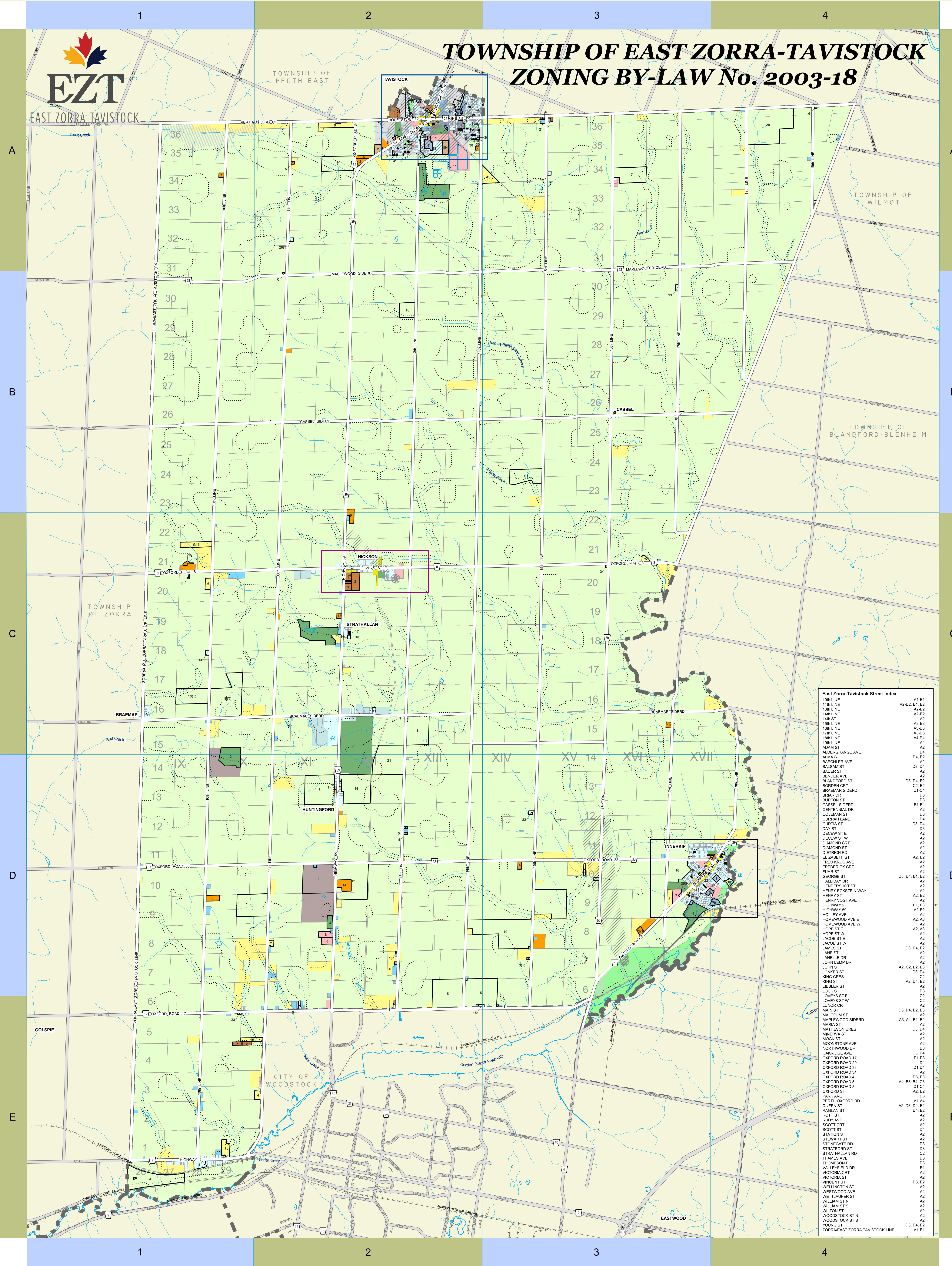




TOWNSHIP OF EAST ZORRA-TAVISTOCK ZONING BY-LAW No. 2003-18

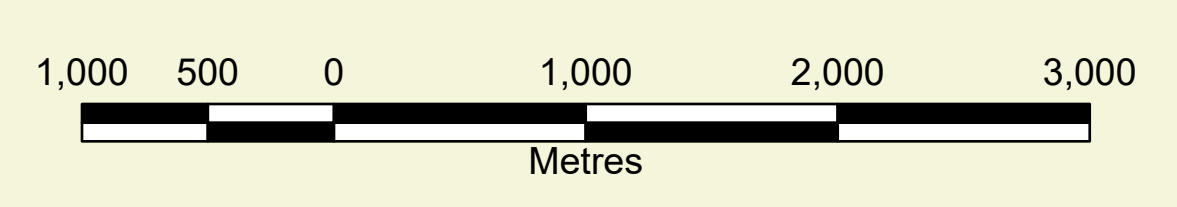


East Zorra-Tavistock Street Index

10th LINE	A1-E1
11th LINE	A2-D2, E1, E2
12th LINE	A2-E2
13th LINE	A2-E2
14th LINE	A2-E2
15th LINE	A2
16th LINE	A3-E3
17th LINE	A3-D3
18th LINE	A3-D3
19th LINE	A4-D4
20th LINE	A4
ADAM ST	A2
ALDERGRANGE AVE	D4
ALMA ST	D4, D2
BAECHLER AVE	A2
BALSAM ST	D3, D4
BAUER ST	A2
BENDER AVE	A2
BLANDFORD ST	D3, D4, E2
BORDEN CRT	C2, E2
BRAEMAR SIDERD	C1-C4
BRIAR DR	D3
BURTON ST	D3
CASSEL SIDERD	B1-S4
CENTENNIAL DR	D3
COLEMAN ST	D3
CURRAH LANE	D4
CURRIS ST	D3, D4
DAY ST	D3
DECEW ST E	A2
DECEW ST W	A2
DIAMOND CRT	A2
DIAMOND ST	A2
DIETRICH RD	A2
ELIZABETH ST	A2, E2
FRED KRIG AVE	A2
FREDERICK CRT	A2
FURIE ST	A2
GEORGE ST	D3, D4, E1, E2
HALLGAY DR	A2
HENDERSHOT ST	A2
HENRY ECKSTEIN WAY	A2
HENRY ST	A2
HENRY VOGT AVE	A2, E2
HIGHWAY 2	E1-E3
HIGHWAY 59	A2-E2
HOLLEY AVE	A2
HOMEWOOD AVE E	A2, A3
HOMEWOOD AVE W	A2, A3
HOPKINS ST	A2
HOPKINS ST W	A2
JACOB ST E	A2
JACOB ST W	A2
JAMES ST	D3, D4, E2
JANE ST	A2
JANIE DR	A2
JOHN LEMPT DR	A2
JOHN ST	A2, C2, E2, E3
JOWNER ST	D3, D4
KING CRT	C2
KING ST	A2, D4, E2
LABLER ST	A2
LOCK ST	D3
LOVEYS ST E	C2
LOVEYS ST W	A2
LUNDY CRT	A2
MAIN ST	D3, D4, E2, E3
MALCOLM ST	A2
MAPLEWOOD SIDERD	A3, A4, B1, B2
MARRA ST	A2
MATHESON CRES	D3, D4
MINERVA ST	A2
MOOR ST	A2
MORNINGTON AVE	A2
NORTHWOOD DR	D3, D4
OXFORD ROAD 17	E1-E3
OXFORD ROAD 29	D4
OXFORD ROAD 33	D1-D4
OXFORD ROAD 34	D3, E3
OXFORD ROAD 4	D3, E3
OXFORD ROAD 5	A4, B3, B4, C3
OXFORD ROAD 8	C1-C4
OXFORD ST	A2, E2
PARK AVE	D3
PERTH-OXFORD RD	A1-A4
QUEEN ST	A2, D3, D4, E2
ROGLAN ST	D4, E2
ROTH ST	A2
RODNEY AVE	A2
SCOTT CRT	D4
SCOTT ST	A2
STATION ST	A2
STEWART ST	A2
STONEGATE RD	D3
STRATFORD ST	D3
STRATHALLAN RD	C2
THAMES AVE	D3
THOMPSON PL	D3
VALLEYFIELD DR	E1
VICTORIA CRT	A2
VICTORIA ST	A2
VINCENT ST	D3, E2
WELLINGTON ST	A2
WESTWOOD AVE	A2
WETTLAGER ST	A2
WILLIAM ST N	A2
WILLIAM ST S	A2
WILTON ST	A2
WOODSTOCK ST N	A2
WOODSTOCK ST S	A2
YOUNG ST	D3, D4, E2
ZORRA-EAST ZORRA TAVISTOCK LINE	A1-E1

ZONING BY-LAW No. 2003-18

- RESIDENTIAL TYPE 1 (R1 ; R1H)
- RESIDENTIAL TYPE 2 (R2; R2(H))
- RESIDENTIAL TYPE 3 (R3)
- RESIDENTIAL EXISTING LOT (RE)
- RURAL RESIDENTIAL (RR)
- ESTATE RESIDENTIAL (ER)
- CENTRAL COMMERCIAL (CC)
- HIGHWAY COMMERCIAL (HC; HC(H))
- AGGREGATE INDUSTRIAL ZONE (ME)
- GENERAL INDUSTRIAL (MG)
- RESTRICTED INDUSTRIAL (MR)
- DEVELOPMENT (D)
- INSTITUTIONAL (I)
- OPEN SPACE (OS)
- RECREATIONAL (REC; REC(H))
- RESTRICTED AGRICULTURAL (A1)
- GENERAL AGRICULTURAL (A2; A2H)
- AGRICULTURAL BUSINESS (AB)
- VILLAGE (V)
- ENVIRONMENTAL PROTECTION 1 OVERLAY
See General Provisions 5.24.1
- ENVIRONMENTAL PROTECTION 2 OVERLAY
See General Provisions 5.24.2
- SOURCEWATER PROTECTION OVERLAY 1 (SP1)
See Section 5.28
- SOURCEWATER PROTECTION OVERLAY 2 (SP2)
See Section 5.28
- CONSERVATION AUTHORITY REGULATION LIMIT
See Section 2.8



LAST UPDATE: MARCH, 2024
DATA MAY BE SUBJECT TO LICENSE.
COPYRIGHT FOR INTELLECTUAL PROPERTY BELONGS WITH THE SOURCE AGENCY. OXFORD COUNTY MAKES THIS DATA AVAILABLE WITHOUT WARRANTY OF ANY KIND, EXPRESSED OR IMPLIED.
THIS DOCUMENT MAY NOT BE REPRODUCED WITHOUT WRITTEN PERMISSION. FOR MORE INFORMATION, PLEASE CONTACT COUNTY OF OXFORD INFORMATION SERVICES AT GIS@OXFORDCOUNTY.CA



THIS IS A COMPOSITE MAP OF KEY MAPS ATTACHED AS SCHEDULE "A" TO ZONING BY-LAW No. 2003-18 AS AMENDED.
FOR ACCURATE REFERENCE RECOUSE SHOULD BE HAD TO THE BY-LAW AND SUBSEQUENT AMENDMENTS.