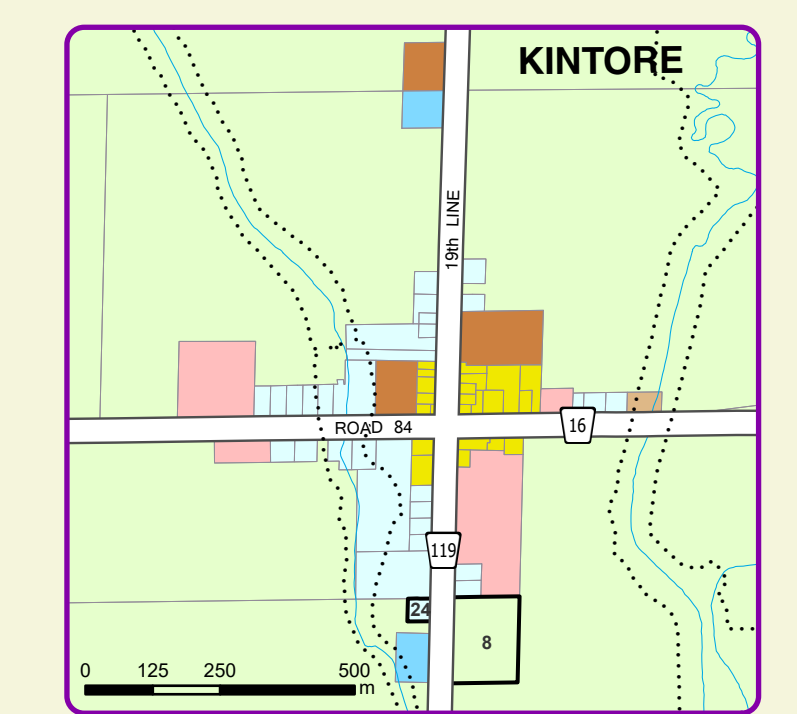
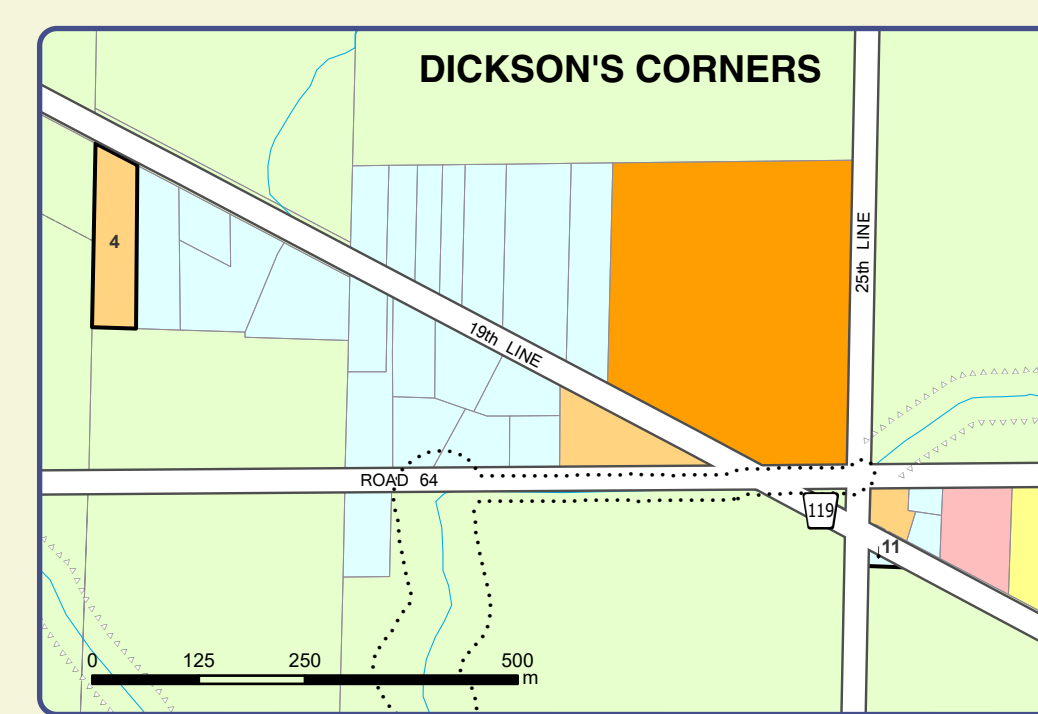
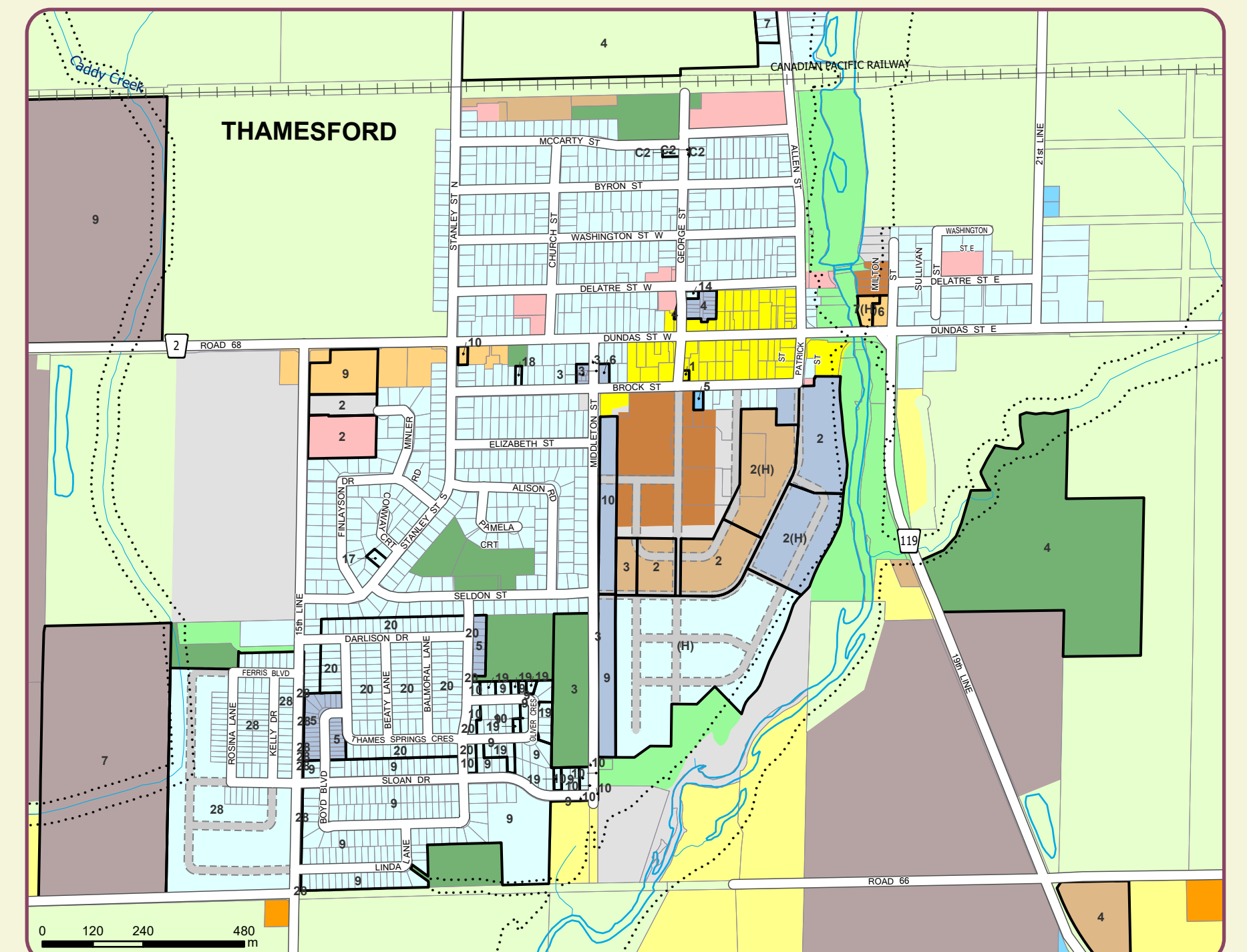
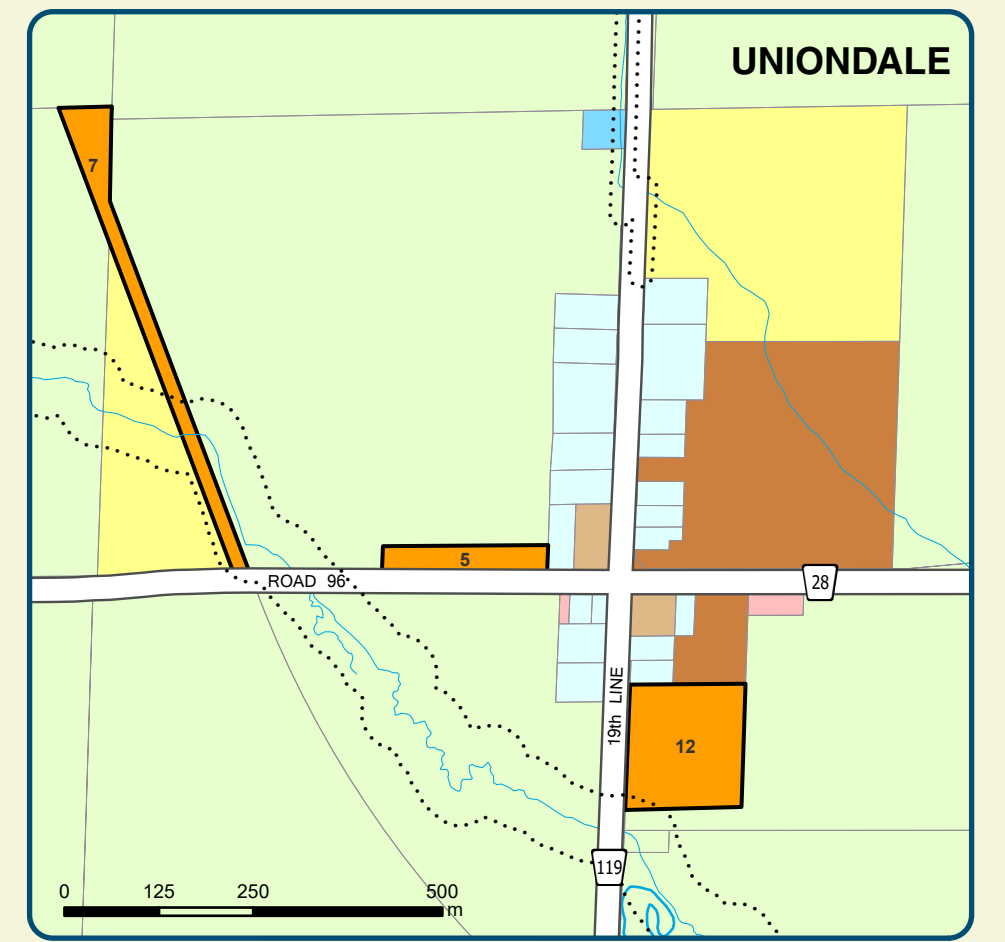
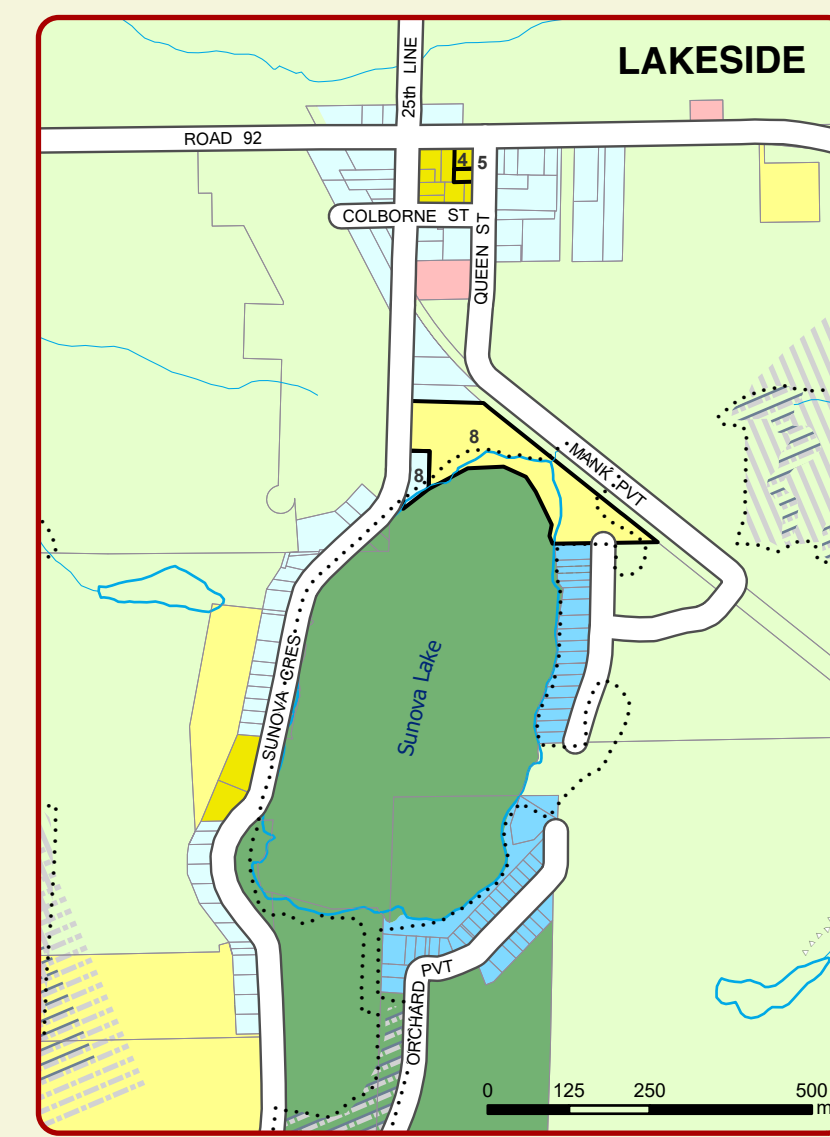
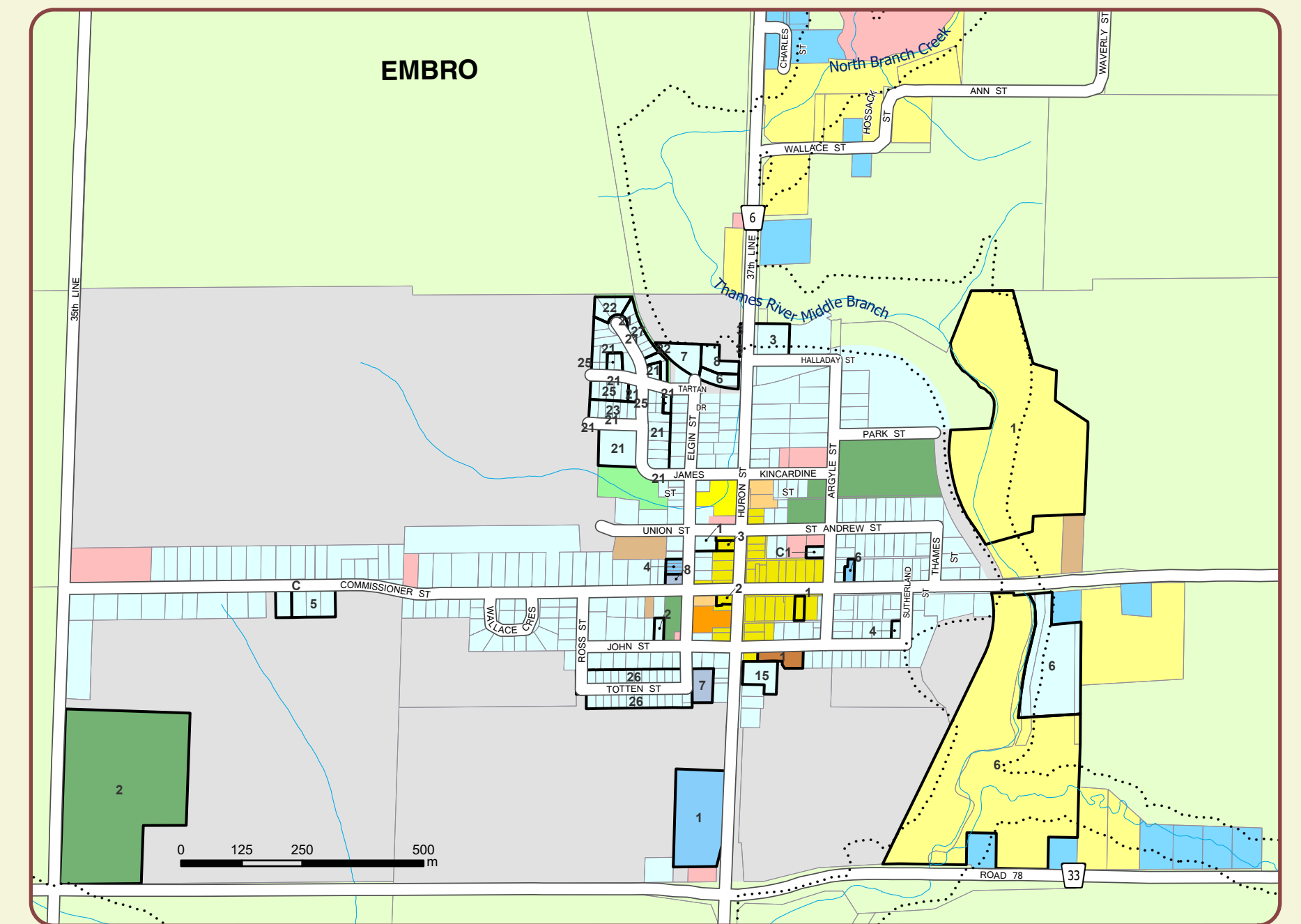
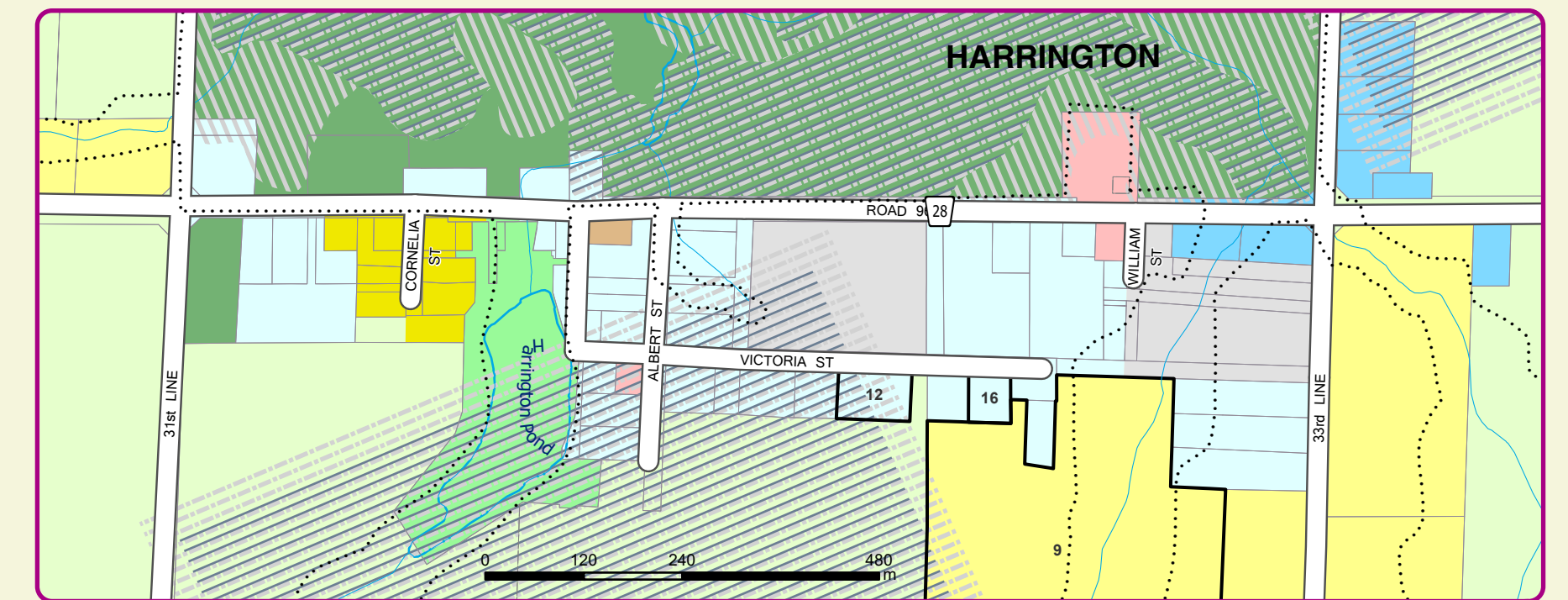
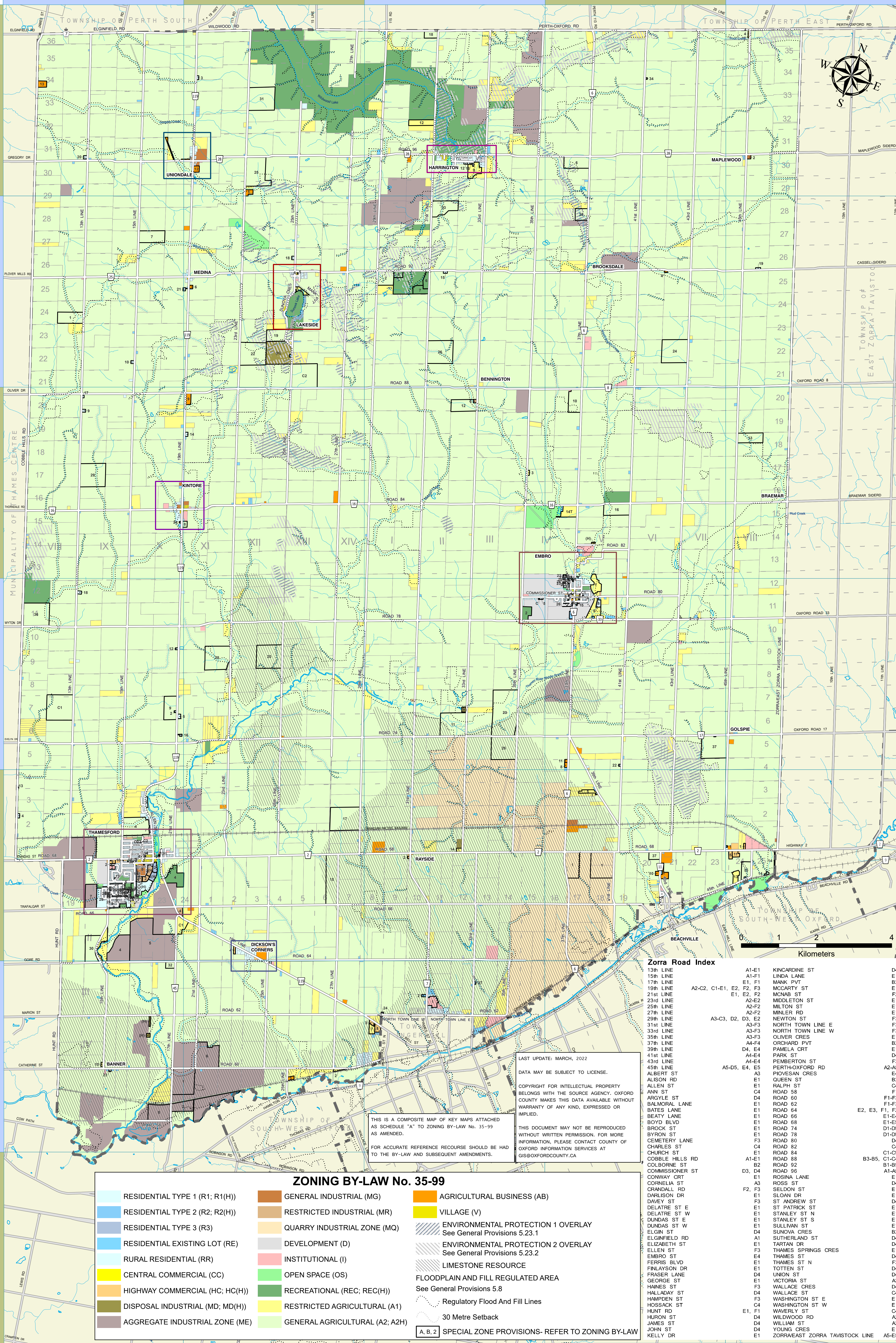


TOWNSHIP OF ZORRA ZONING BY-LAW No. 35-99



Zorra Road Index

13th LINE	A1-E1	KINCARDINE ST	D4
15th LINE	A1-F1	LINDA LANE	E1
17th LINE	E1, F1	MARK PVT	B2
19th LINE	E2, F2, F3	MCCARTHY ST	E1-E4
21st LINE	E1, E2, F2	MCNAB ST	F1-F3
23rd LINE	A2-E2	MIDDLETON ST	E1
25th LINE	A2-F2	MILTON ST	B2
27th LINE	A2-F2	MINLER RD	D4
29th LINE	D3, E2	NEWTON ST	E1
31st LINE	A3-F3	NORTH TOWN LINE E	F3
33rd LINE	A3-F3	NORTH TOWN LINE W	F3
35th LINE	A3-F3	OLIVER CRES	E1
37th LINE	A4-F4	ORCHARD PVT	B2
39th LINE	D4, E4	PAMELA CRT	D4
41st LINE	A4-E4	PARK ST	E1
43rd LINE	A4-E4	PEMBERTON ST	F3
45th LINE	A5-D5, E4, E5	PERTH-OXFORD RD	A2-A5
ALBERT ST	A3	PIOVESAN CRES	E4
ALISON RD	E1	QUEEN ST	B2
ANN ST	D4	RALPH ST	C4
ARGYLE ST	D4	ROAD 58	F1-F3
BALMORAL LANE	E1	ROAD 60	F1-F3
BATES LANE	E1	ROAD 62	E1
BEATY LANE	E1	ROAD 64	F1, F2
BOYD BLVD	E1	ROAD 66	E1-E4
BROCK ST	E1	ROAD 68	E1-E5
BYRON ST	E1	ROAD 70	D1-D5
CEMETERY LANE	F3	ROAD 72	D1-D5
CHARLES ST	C4	ROAD 74	C4
CHURCH ST	E1	ROAD 76	C4
COBBLE HILLS RD	A1	ROAD 78	C4
COLBORNE ST	B2	ROAD 80	C4
COMMISSIONER ST	D3, D4	ROAD 82	C4
CORNWAY CRT	E1	ROAD 84	F3
CORNELIA ST	A3	ROAD 86	B3-B5
CORNELL RD	F2, F3	ROAD 88	B1-B5
CRANDALL RD	E1	ROAD 90	A1-A5
DELAWARE ST E	E1	ROAD 92	E1
DELAWARE ST W	F3	ROSLAN LANE	D4
DUNDAS ST E	F3	ROSS ST	D4
DUNDAS ST W	E1	SELDON ST	E1
ELGIN ST	E1	SLOAN CRT	D4
ELGINFIELD RD	E1	ST ANDREW ST	E1
ELIZABETH ST	E1	ST PATRICK ST	E1
ELLEN ST	E1	STANLEY ST N	E1
EMBRO ST	E1	STANLEY ST S	E1
FERRIS BLVD	E1	SULLIVAN ST	E1
FRANLYSON DR	E1	SUNNVA CRES	E1
FRASER LANE	D4	SUTHERLAND ST	D4
GEORGE ST	E1	TARTAN ST	D4
HAINES ST	F3	THAMES SPRINGS CRES	E1
HALLADAY ST	D4	THAMES ST	D4
HAMPDEN ST	F1, F3	THAMES ST N	F3
HOSSACK ST	C4	TOTTEN ST	D4
HUNT RD	E1, F1	UNION ST	D4
HURON ST	D4	VICTORIA ST	A3
JAMES ST	D4	WALLACE CRES	D4
JOHN ST	D4	WALLACE ST	C4
KELLY DR	E1	WASHINGTON ST E	E1
		WASHINGTON ST W	E1
		WAVERLY ST	C4
		WILDWOOD RD	A2
		WILLIAM ST	A3
		YOUNG CRES	E1
		ZORRAEAST ZORRA TAVISTOCK LINE	A5-E5

ZONING BY-LAW No. 35-99

RESIDENTIAL TYPE 1 (R1; R1(H))	GENERAL INDUSTRIAL (MG)	AGRICULTURAL BUSINESS (AB)
RESIDENTIAL TYPE 2 (R2; R2(H))	RESTRICTED INDUSTRIAL (MR)	VILLAGE (V)
RESIDENTIAL TYPE 3 (R3)	QUARRY INDUSTRIAL ZONE (MQ)	ENVIRONMENTAL PROTECTION 1 OVERLAY See General Provisions 5.23.1
RESIDENTIAL EXISTING LOT (RE)	DEVELOPMENT (D)	ENVIRONMENTAL PROTECTION 2 OVERLAY See General Provisions 5.23.2
RURAL RESIDENTIAL (RR)	INSTITUTIONAL (I)	LIMESTONE RESOURCE
CENTRAL COMMERCIAL (CC)	OPEN SPACE (OS)	FLOODPLAIN AND FILL REGULATED AREA See General Provisions 5.8
HIGHWAY COMMERCIAL (HC; HC(H))	RECREATIONAL (REC; REC(H))	Regulatory Flood And Fill Lines
DISPOSAL INDUSTRIAL (MD; MD(H))	RESTRICTED AGRICULTURAL (A1)	30 Metre Setback
AGGREGATE INDUSTRIAL ZONE (ME)	GENERAL AGRICULTURAL (A2; A2H)	A. B. 2 SPECIAL ZONE PROVISIONS- REFER TO ZONING BY-LAW