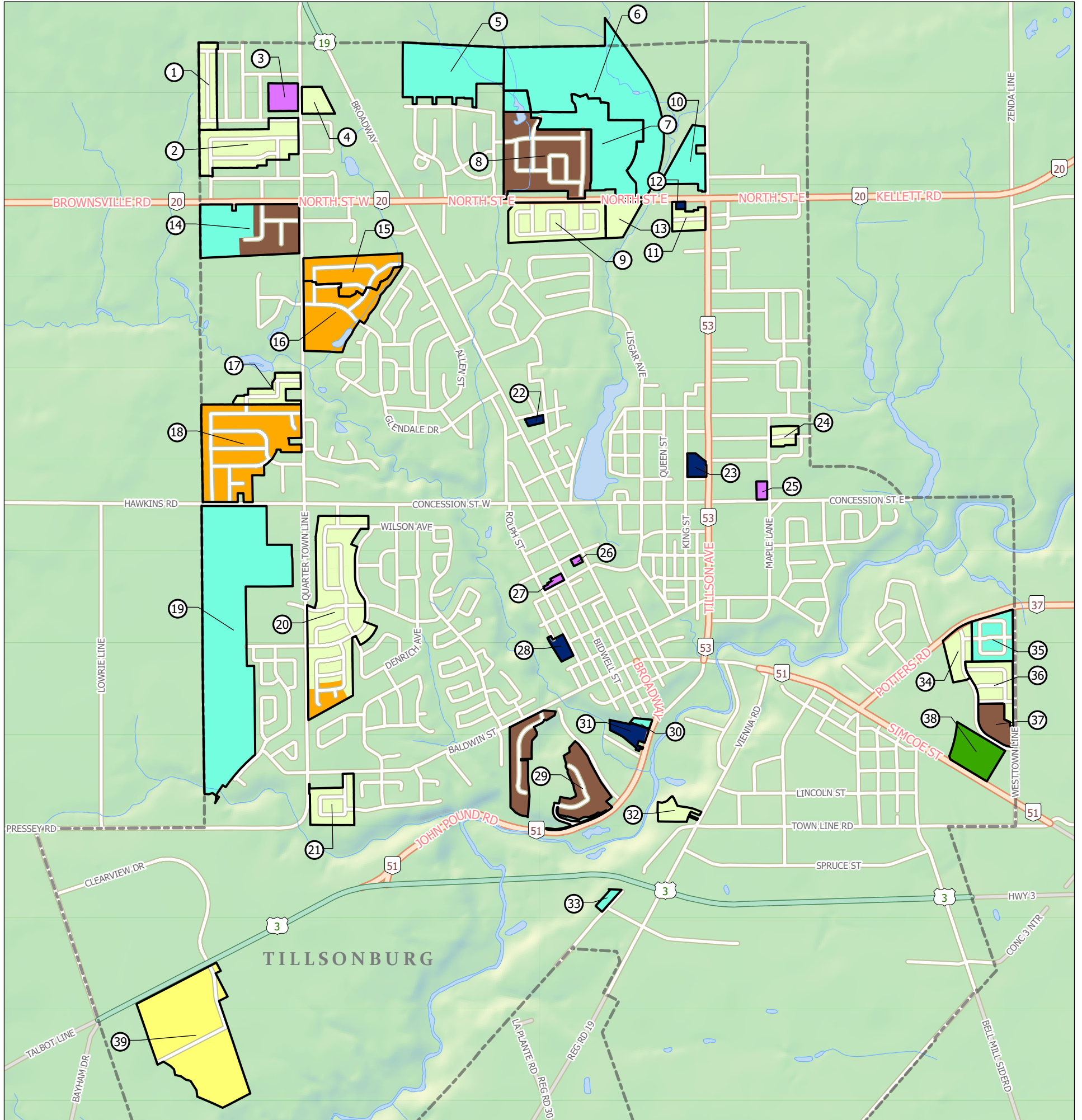


# Development Activity - Town of Tillsonburg

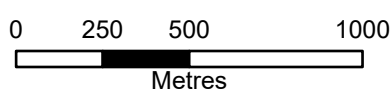
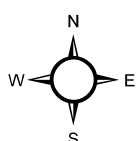


Q:\Planning\Planning & GIS Analysis\Mapping\DevelopmentActivity\DevelopmentActivity.aprx 2024-05-02 10:31 AM jgreen

- Residential Development**
- Circulated or Submitted Plan
  - Built or Nearly Built Plan
  - Draft Approved Plan
- Condominium Plan**
- Condominium Plan
- Industrial Development**
- Approved Site Plan
  - Registered Plan
  - Registered Plan
  - Built Out Plan

Map #	Name	File Number	Total Units
1	Southridge Subdivision (Morning Glory)	32T-89006	46
2	Woodland Estates	32T-88005	101
3	2563557 Ontario Inc.	TSPC7-201	104
4	2563557 Ontario Inc.	TSPC7-178	64
5	Performance Communities Realty Inc.	SB22-03-7	250
6	Lindprop Corp.	SB22-07-7	537
7	Lindprop Corp.	SB21-07-7	222
8	Lindprop Corp.	32T-07006	273
9	Mike Hutchinson Properties (Northcrest Estates)	SB19-06-7	158
10	Ambrus	SB21-06-7	49
11	Sandy Court (McLaughlin)	32T-96001	27
12	Tillsonburg Developments Inc & W.H. Developments Inc.	TSPC7-220	6
13	Hayhoe Rentals Ltd.	TSPC7-200	59
14	Southside Construction Mgmt (London) Ltd.	SB20-06-7/TSPC7-229	234
15	Brookside II	32T-03005	73
16	Brookside I	32T-77004	45
17	MGI Inc. (The Links)	32T-90011	38
18	Oak Park (phase 1 & 2)	32T-90006	214
19	Victoria Wood (Tillsonburg-West) GP Inc.	SB22-01-7	1117
20	Victoria Wood (Tillsonburg) GP Inc.	32T-06005	343

Map #	Name	File Number	Total Units
21	Woodhaven (Permterra Developments)	32T-05004, CDM-08001	54
22	Tillsonburg Non-profit Housing	TSPC7-179	16
23	1822094 Ontario Inc. (Escalade Property Corp.)	OP20-13-7	98
24	Wetlauffer	SB14-06-7	21
25	Escalade Property Corp.	TSPC7-195	49
26	JMR Properties Ltd	CD19-02-7	28
27	Stationview Development Corp.	TSPC7-142	188
28	TVDSB (83 Rolph Street)	TSPC7-177	45
29	2407774 Ontario Ltd.	SB20-02-7	88
30	2412374 Ontario Ltd.	CD21-02-7	33
31	Aspen Developments Inc.	CDM-02001, SPC 7-81, OXC-64	23
32	1967113 Ontario Inc.	TSPC7-199	26
33	Sandham	SB22-04-7	6
34	Harvest Retirement Community (Oxnard Developments)	SB10-03-7, ZN7-18-03, TSPC-141-1	174
35	Oxnard Potters Gate Inc. (Jacko & Watson-Vogan)	SB21-09-7	79
36	2385667 Ontario Ltd. (Oxnard Developments)	SB18-02-7	88
37	Nautical Lands - York Hop Corporation - Harvest Retirement C	SB10-03-7 (TSPC-141-1)	152
38	Harvest Ave Inc.	TSPC-230	506
39	Town Industrial Park	32T-09004	



LAST UPDATE: May, 2024

Note: These maps are not intended to show all development. Only larger residential and industrial subdivisions/site plan applications are depicted.