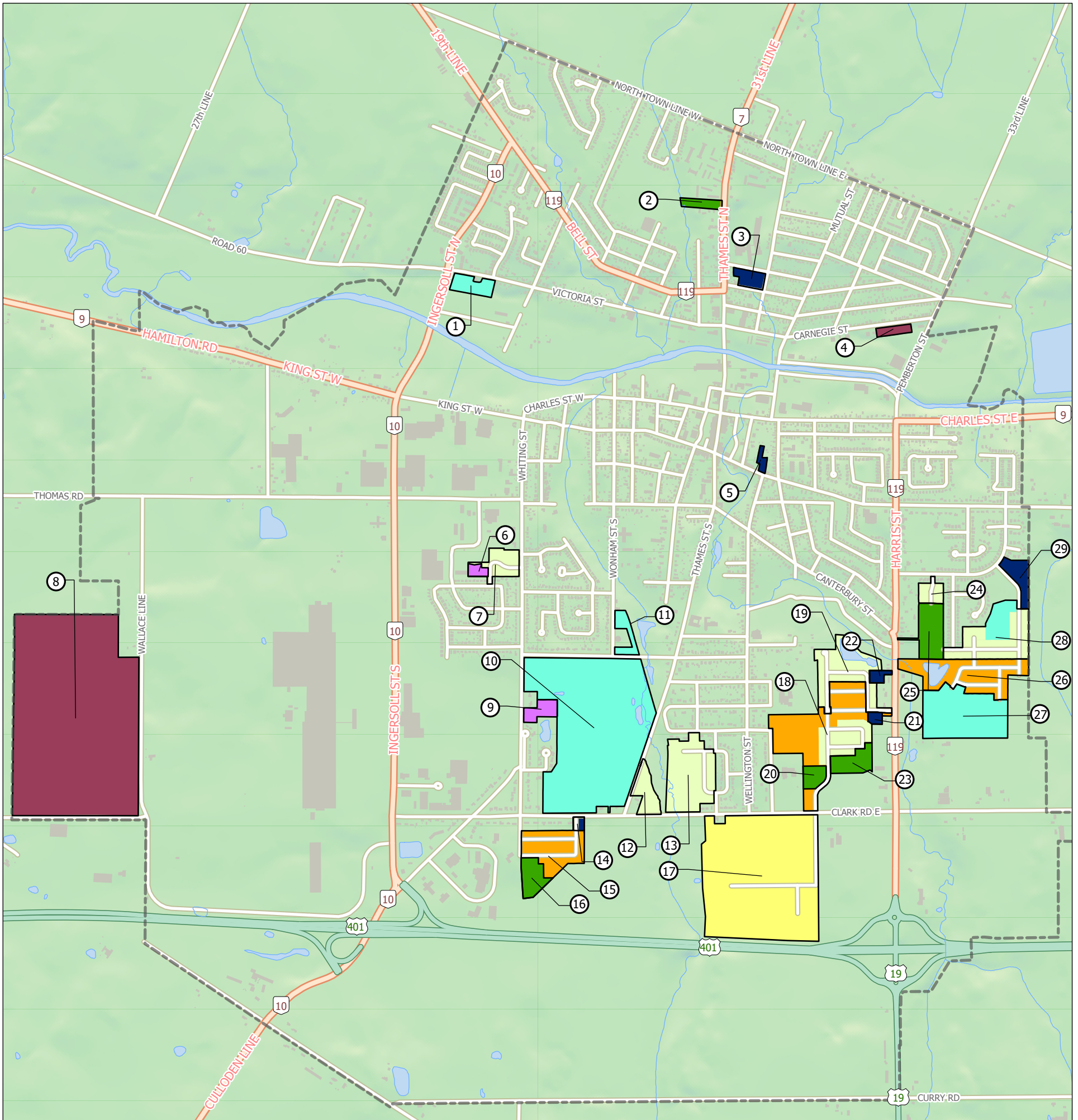


Development Activity - Town of Ingersoll



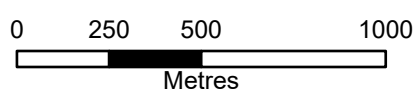
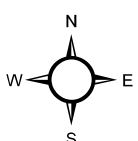
- | | | |
|---|--|---|
| Residential Development | Condominium Plan | Industrial Development |
| ■ Circulated or Submitted Plan | ■ Approved Site Plan | ■ Registered Plan |
| ■ Built or Nearly Built Plan | ■ Registered Plan | ■ Draft Approved Plan |
| ■ Draft Approved Plan | ■ Built Out Plan | |

Q:\Planning\Planning & GIS Analysis\Mapping\DevelopmentActivity\DevelopmentActivity.aprx 2024-05-08 10:45 AM jgreen

DRAFT

Map #	File Number	Name	Total Units
1	32T-91001	McHugh-Ingrox Ltd.	10
2	ZN6-21-11	Vaughan Dev. Corp.	40
3	SP6-14-04-1, OP22-08-6, ZN6-22-05	Royal King Management Corp.	23
4	SB12-01-6	County Contracting of Wheatley Inc.	
5	SP6-22-05	Boxwood Investments Inc.	24
6	SP6-20-01, CD20-03-6	Oak Country Homes Ltd.	10
7	SB12-03-6, SB13-01-6	ATSA Corp.	29
8	SB22-03-6	2862083 Ontario Inc.	
9	SP6-18-02, CD18-03-6	Pomponio	16
10	SB20-04-6	Ingersoll Greens Inc.	773
11	SB21-01-6	Erie Thames Powerlines Corp.	18
12	SP16-19-04	Plester	120
13	SB12-02-6	Schout Group Inc.	45
14	SP6-18-01	Reeves Land Corp.	8
15	SB17-02-6	Reeves Land Corp. (Golf Estates)	84

Map #	File Number	Name	Total Units
16	SP6-22-01, CD22-02-06	Reeves Land Corp.	38
17	32T-07007	Town of Ingersoll	
18	SB14-02-6	Sifton Properties Ltd.	124
19	32T-06001	Sifton Properties Ltd.	54
20	SP6-19-01	Sifton Properties Ltd. (Block 65)	133
21	SP6-16-05	Sifton Properties Ltd. (Block 63)	11
22	SP6-16-03	Sifton Properties Ltd. (Block 62)	14
23	SB16-04-6	Sifton Properties Ltd. (Phase 5)	38
24	32T-08001	Cam-Don Properties	10
25	SB22-08-6	1879784 Ontario Inc.	83
26	32T-06007	1658110 Ontario Ltd.	82
27	SB21-17-6	1879784 Ontario Inc. (Klondike Homes)	104
28	32T-87004	Oak Country Homes Ltd.	84
29	SP6-18-03	187984 Ontario Inc.	70



LAST UPDATE: May, 2024

Note: These maps are not intended to show all development. Only larger residential and industrial subdivisions/site plan applications are depicted.